

ANNEXURE: LIME HANDLING AREA NORMAL MCC PANEL

SPECIFICATION OF MCC PANEL FOR LIME HANDLING AREA NORMAL MCC PANEL.

The MCC Panel shall be made of 2mm thick CRCA sheet steel painted with POWDER COATING in SIEMENS GREY SHADE.

The Panel shall have BASE FRAME painted black enamel paint.

The offer shall include supply of MS STAND made of suitable size painted enamel black for mounting the panel. The ground clearance should be 750 mm.

The panel shall be provided with 3mm thick DETACHABLE GLAND PLATES for Incoming cable and Outgoing Cables.

The outgoing Motor Cables and Control and Remote Cables shall be taken through CABLE CHAMBER and terminated in the Terminal Blocks. The size of the Cable Chamber shall be of sufficient size for all the cables.

All the Doors of the MCC Feeders, Incoming SFU, Cable Chamber etc shall have individual doors which are lockable.

The panel shall be provided with EARTHING BOLTS on either side. Also, the Panel and the Frame (STAND) shall be earthed using 50 x 6 mm GI STRIP on either side.

DANGER BOARD of standard size made of MS Sheet with instructions in TELUGU, HINDI AND ENGLISH shall be fixed to the Panel.

The Control Transformer shall be placed in a separate CHAMBER. Control Bus Bars shall be of Copper of size 10mm x 5 mm (P & N).

The MAIN BUS BARS shall be of suitable size ALUMINIUM FOR R, Y, B AND N. The Connection from Incoming SFU to the MAIN BUS BARS shall also be of suitable size ALUMINIUM.

The TYPICAL GA Drawing of the MCC Panels with SLD and Control Circuit are attached.

The BOM i.e COMPONENT LIST WITH PREFERRED MAKES is attached.

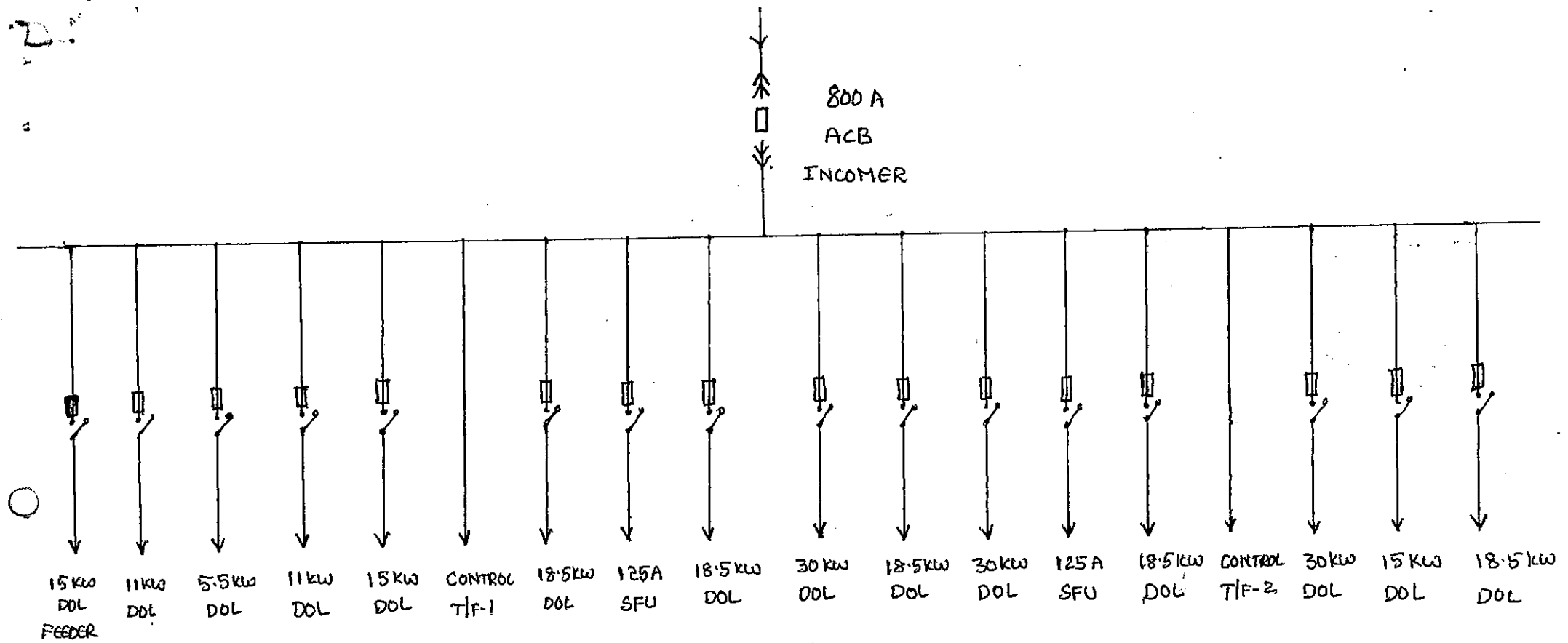
Anything required for correct operation of the system (if not included in our specification and drawings) may be added and intimated for approval.

NOTE : TB FOR MOTOR CABLES SHALL BE OF BOLTED TYPE WITH SEPARATORS, LINK TYPE FOR CT CONNECTIONS AND STACK TYPE SUITABLE FOR PIN TYPE LUGS FOR CONTROL CIRCUIT. ALL SHOULD BE OF SUITABLE RATING.

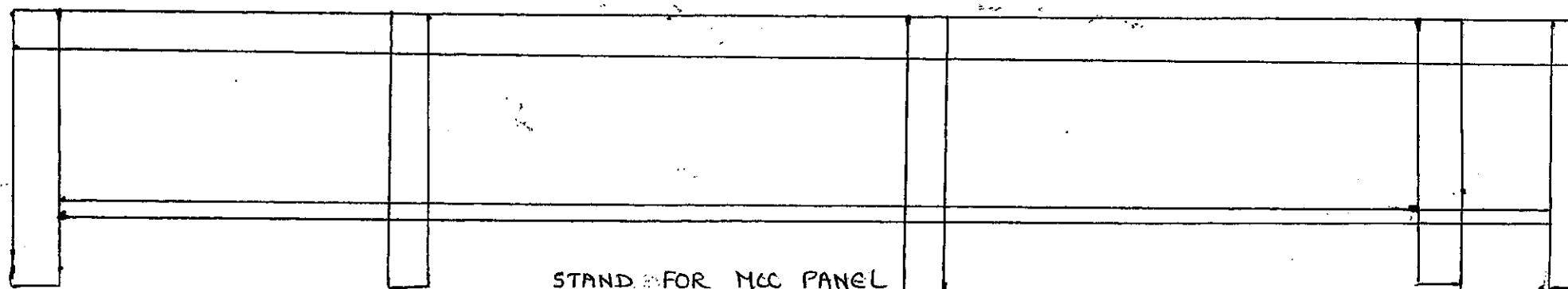
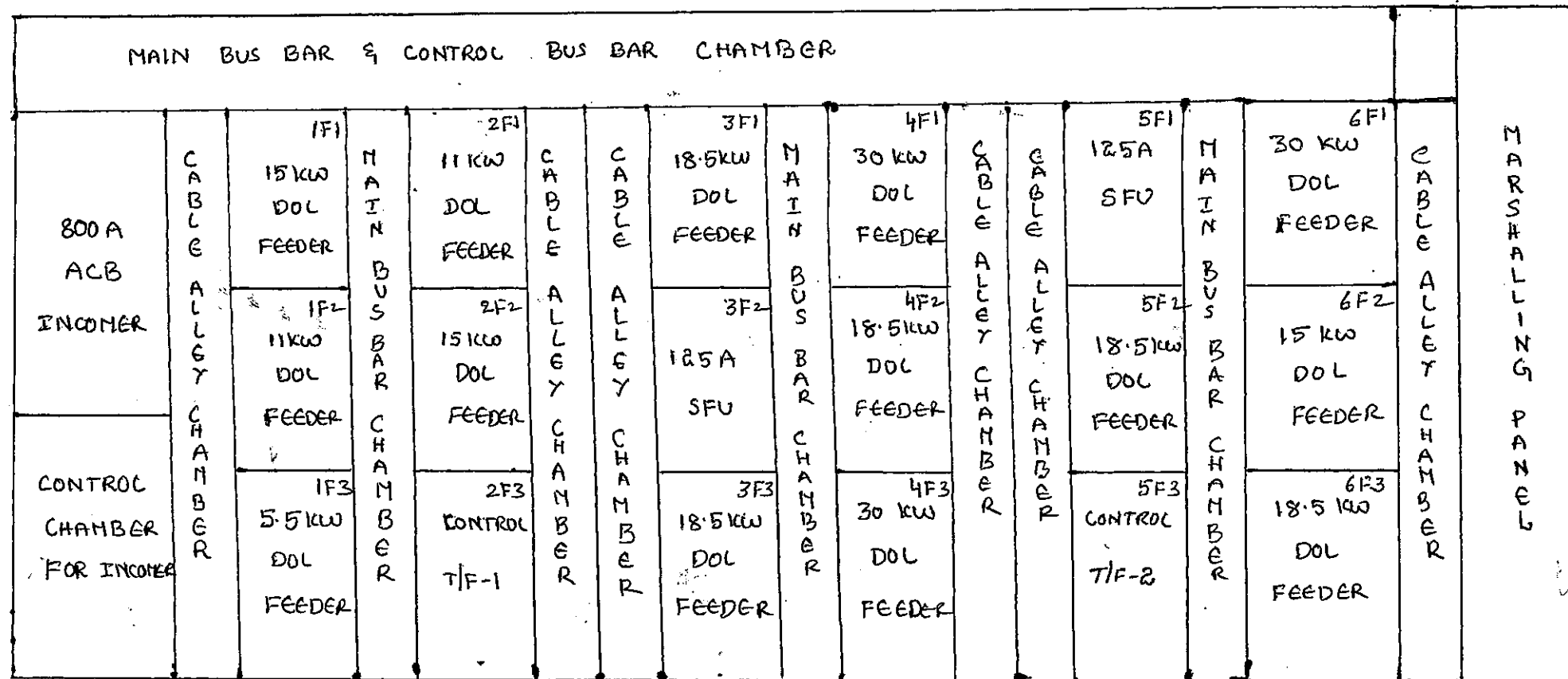
NOTE : ALL THE DRAWINGS AND BOM SHOULD BE GOT APPROVED BEFORE TAKING FOR MANUFACTURE



SLD OF LIME HANDLING AREA - NORMAL MCC PANEL.



GA DRAWING OF LINE HANDLING AREA NORMAL MCC PANEL



STAND FOR MCC PANEL

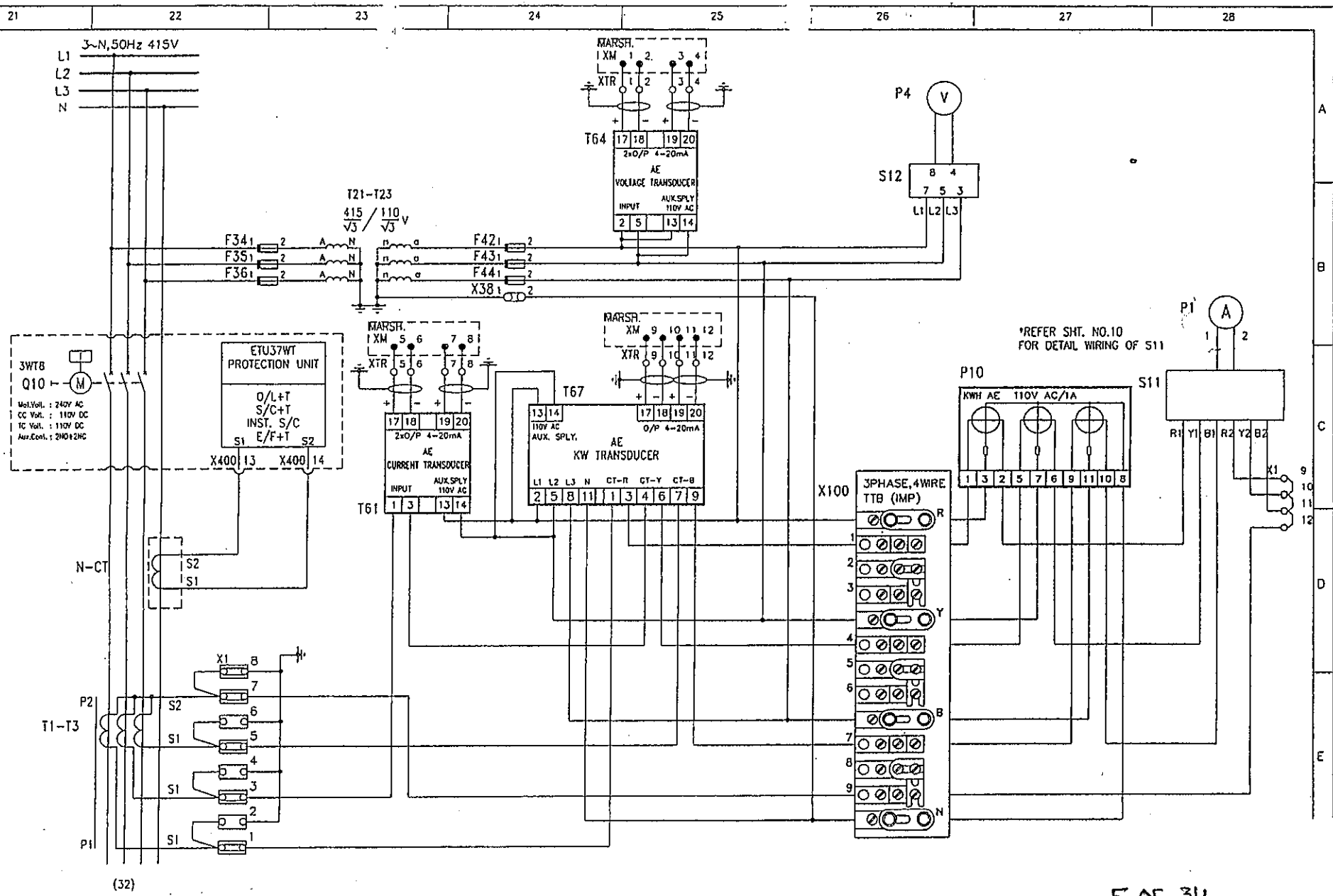
MARSHALLING PANEL:

Main Sign	Terminal No.		Main Sign	Terminal No.
	XM		FDR No.*	
PLC	0	1	XTR	1
PLC	0	2	XTR	2
PLC	0	3	XTR	3
PLC	0	4	XTR	4
PLC STOP	0	5	X3	9
PLC STOP	0	6	X3	10
PLC START COMMAND	0	7	X3	13
PLC START COMMAND	0	8	X3	14
PLC COMMON	0	9	X5	1
PLC RUN STATUS	0	10	X5	2
PLC RUN LOCAL MODE SEL	0	11	X5	3
PLC REMOTE MODE SELECTED	0	12	X5	4
PLC READY TO CLOSE	0	13	X5	5
PLC MOTOR TRIP	0	14	X5	7
SPARE	0	15		
SPARE	0	16		

MARSHALLING PANEL FOR LINE HANDLING AREA NORMAL MCC PANEL FOR THE FOLLOWING FDR NO: 1F1, 1F2, 1F3, 2F1, 2F2, 3F1, 3F3, 4F1, 4F2, 4F3, 5F2, 6F1, 6F2 AND 6F3.

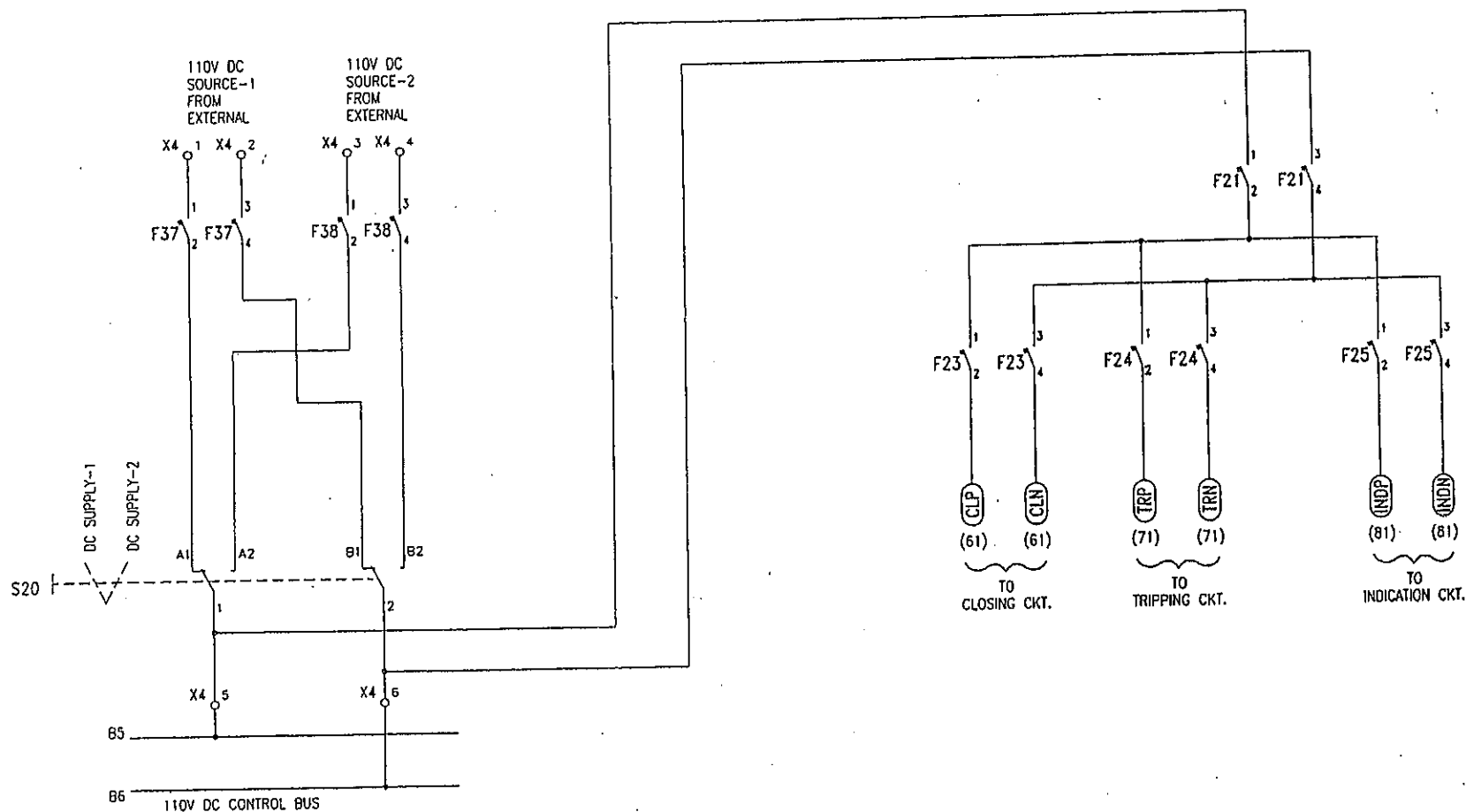
THE INFORMATION CONTAINED HEREIN IS THE PROPERTY OF THE UNITED STATES GOVERNMENT AND IS LOANED TO YOU BY THE NATIONAL BUREAU OF STANDARDS. IT IS TO BE USED FOR THE PURPOSES FOR WHICH IT IS LOANED AND IS NOT TO BE REPRODUCED OR TRANSMITTED IN ANY FORM OR BY ANY MEANS, ELECTRONIC OR MECHANICAL, INCLUDING PHOTOCOPYING, RECORDING, OR BY ANY INFORMATION STORAGE AND RETRIEVAL SYSTEM, WITHOUT PERMISSION IN WRITING FROM THE NATIONAL BUREAU OF STANDARDS.

BASIC MODULE : - 1001-1003



The reproduction or use of this document or its contents is not permitted without express written authority of the Department of Defense. All rights are reserved. No part of this document may be reproduced or transmitted in any form or by any means electronic or mechanical, including photocopying and recording, or by any information storage or retrieval system, except as may be permitted in writing by the Department of Defense.

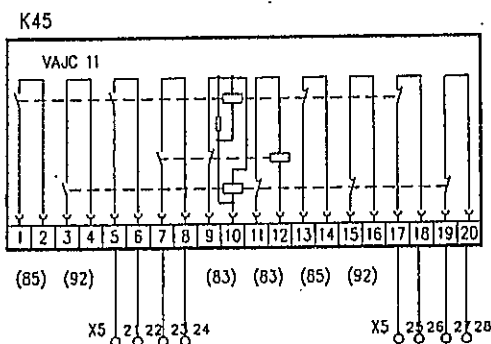
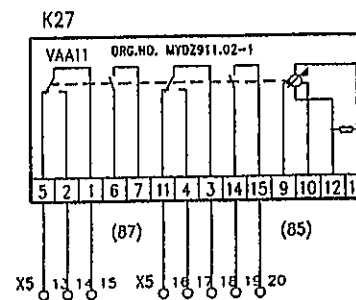
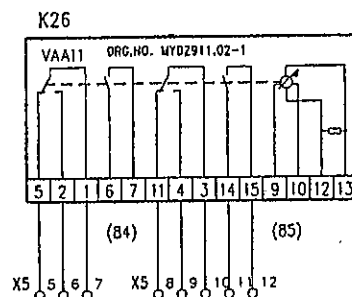
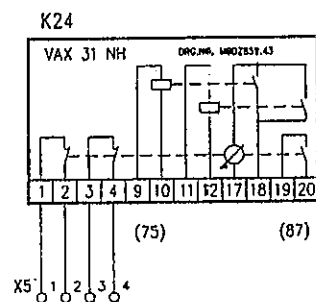
DULE : - 1001-1003



The reproduction, transmission or use of this document or its contents is not permitted without express written authority from the Department of Defense. All rights are reserved. No part of this document may be reproduced or transmitted in any form or by any means electronic or mechanical, including photocopying and recording, or by any information storage or retrieval system, except as may be permitted in writing by the Department of Defense.

DD FORM 1001-1003

51 52 53



54

55

56

57

58

A

B

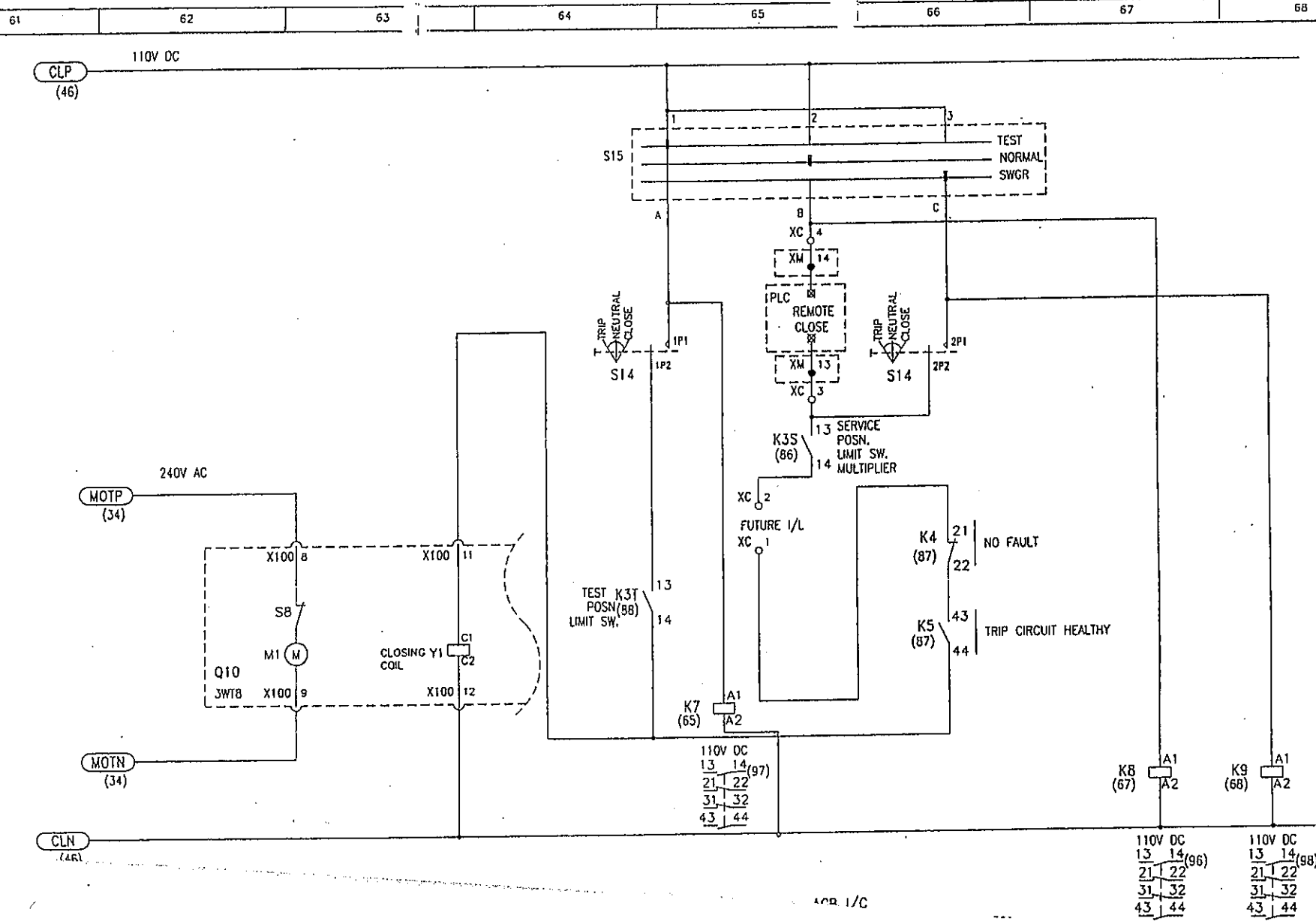
C

D

E

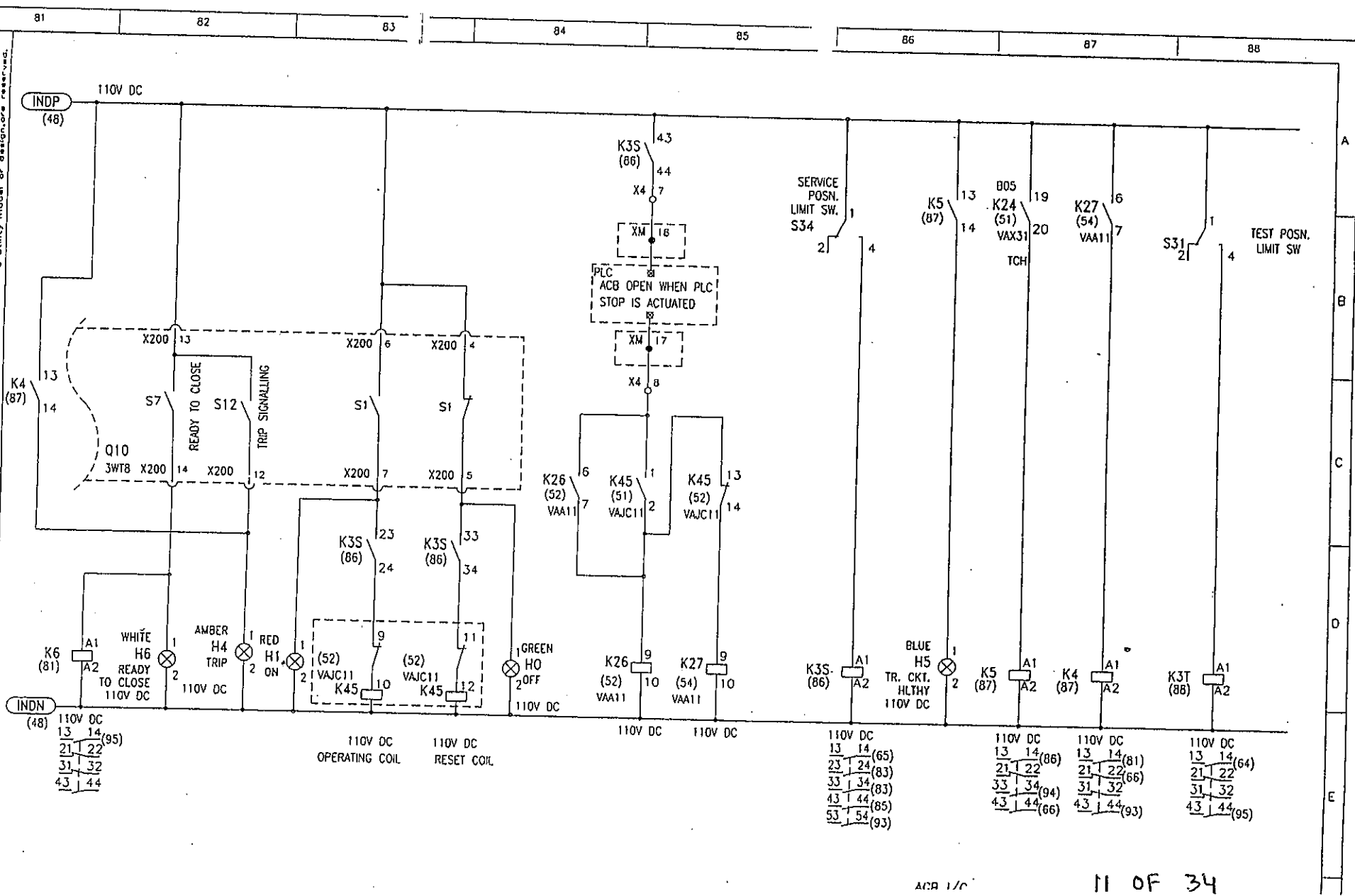
The reproduction, transmission or use of this document or its contents is not permitted without express written authority of the U.S. Navy. All rights are reserved. No part of this document may be reproduced in any form or by any means electronic or mechanical, including photocopying and recording, or by any information storage or retrieval system, except as may be permitted in writing by the U.S. Navy.

1001-1003



The reproduction, transmission or use of this document or its contents is prohibited without the express written authority of the manufacturer. The manufacturer assumes no responsibility for any errors or omissions in this document. All rights are reserved. No part of this document may be reproduced without the express written authority of the manufacturer.

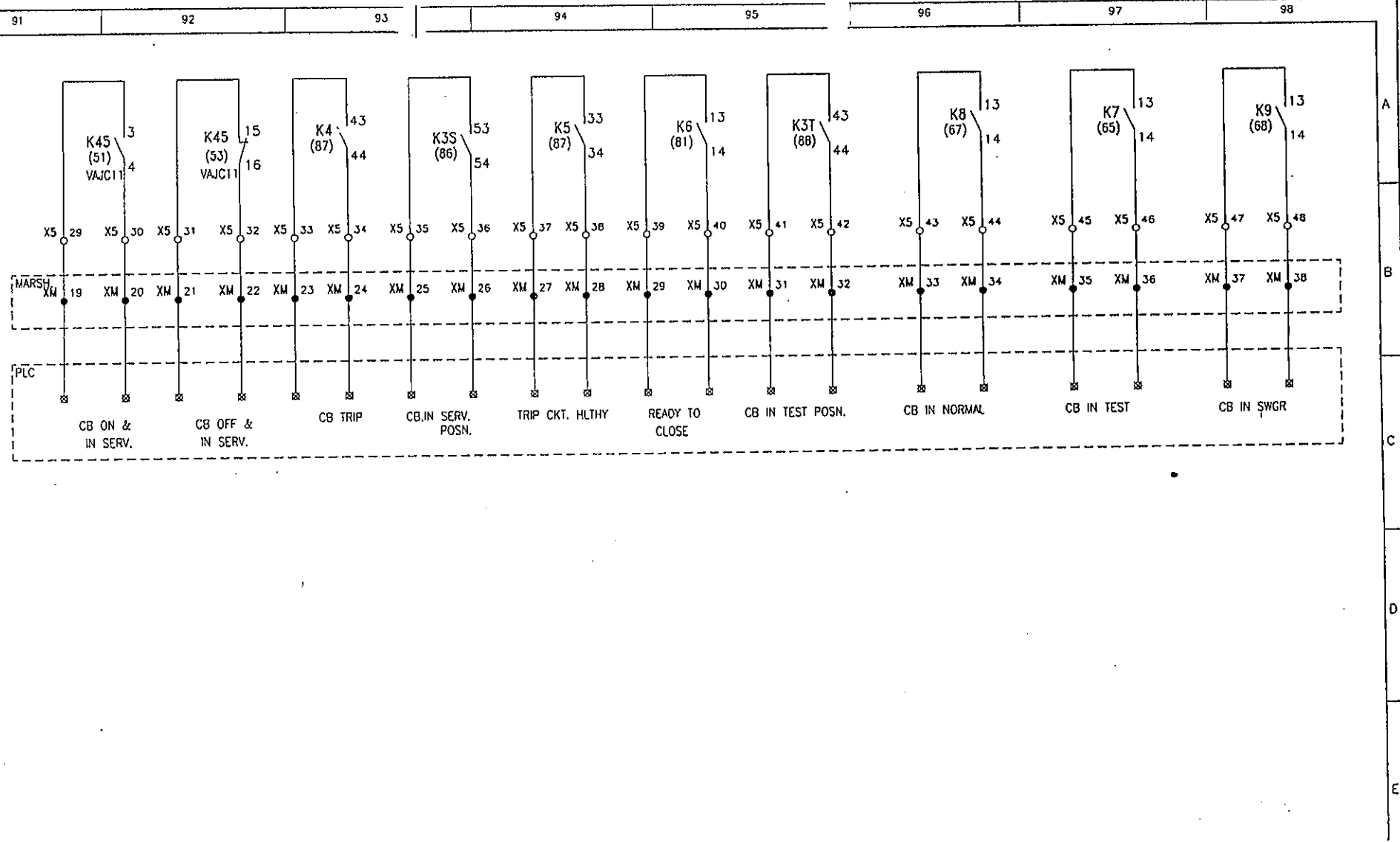
IC MODULE : 1001-1003



ACB 1/0

The reproduction of this document for use in any form or by any means, without express written permission of the copyright owner, is prohibited. All rights, including copyright, are reserved by the copyright owner.

MODULE : - 1001-1003



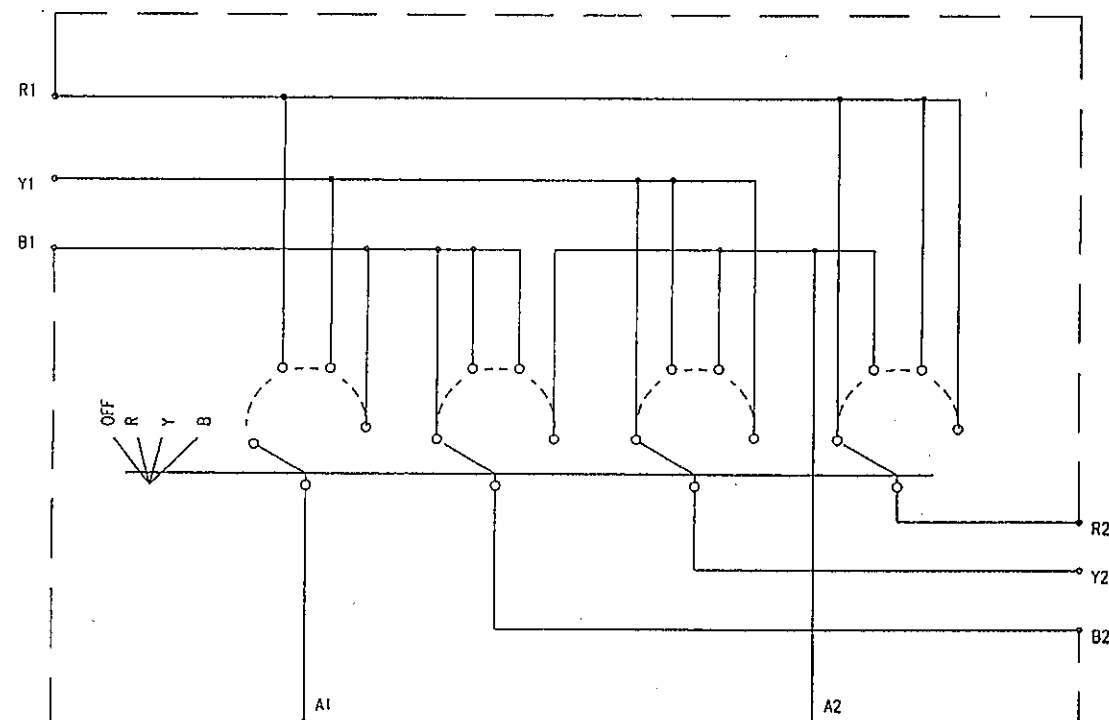
The reproduction, transmission or use of this document or its contents is not permitted without express written authority. All rights are reserved. No part of this document may be reproduced in any form or by any means electronic or mechanical, including photocopying and recording, or by any information storage or retrieval system, except as may be permitted in writing by the copyright owner. All rights are reserved.

MODULE : - 1001-1003

101 102 103 104 105 106 107 108

AMMETER SELECTOR SWITCH (S11)

STAYPUT MAKE BEFORE BREAK TYPE
WITH WING KNOB HANDLE



CONTACT NORMALLY OPEN

14 OF 34

[illegible]

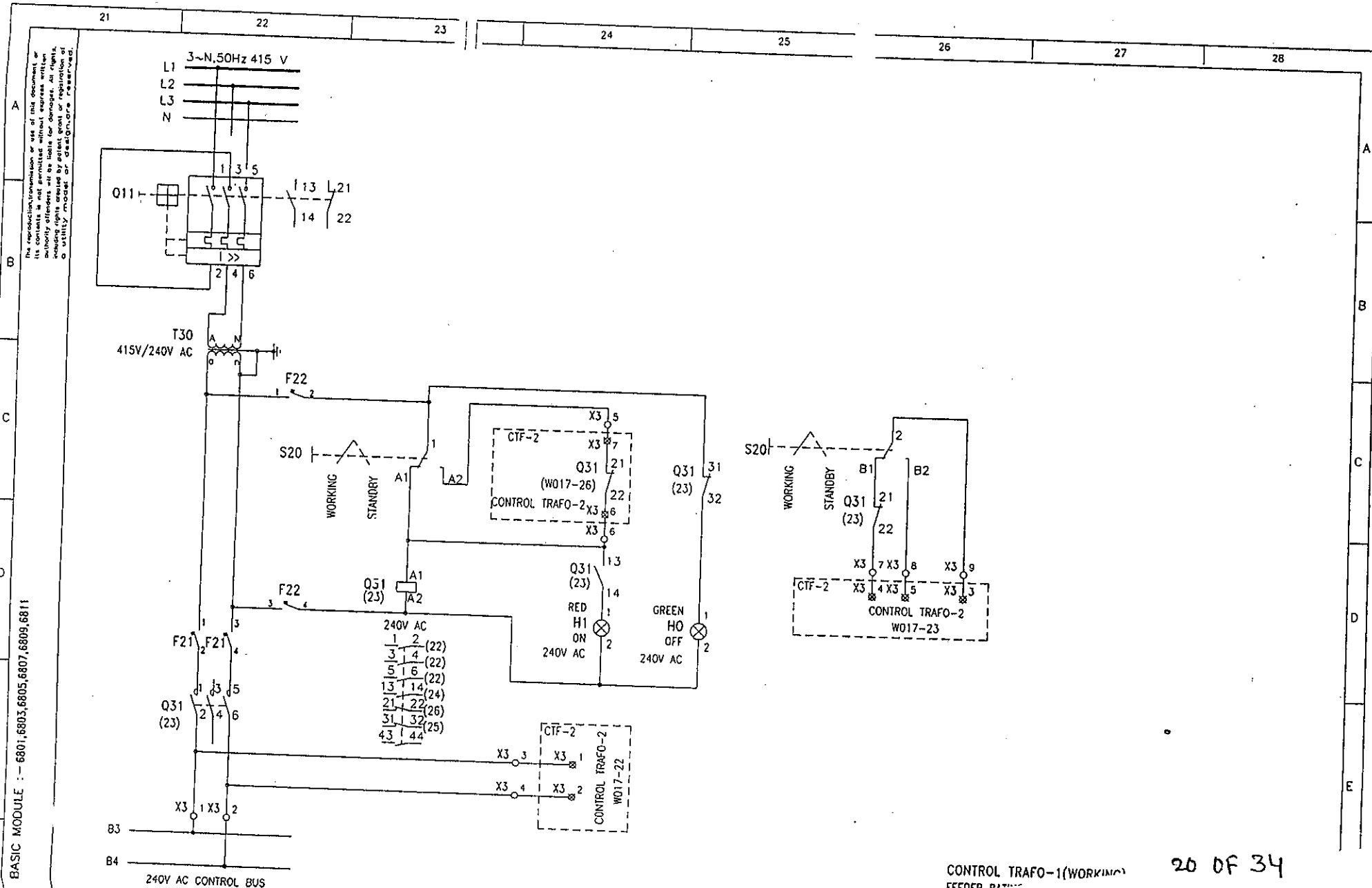
16 OF 34

18 OF 34

The reproduction, transmission or use of the information or contents is not permitted without the express written authority of the originator. All rights, including copyright, are reserved. No part of this document may be reproduced in any form or by any means without prior written permission of the originator.

FILE : - 1001-1003

PANEL NO.		FEEDER NO.		WIRE LOOPS		Strip		Target Sign.		Cable Details		Used Cores	
Terminal No.	Main Sign.	Terminal No.	Main Sign.	Terminal No.	Main Sign.	Terminal No.	Main Sign.	Terminal No.	Main Sign.	NO.	TYPE	From other sheets	Total
1		1		1		1		1		1			
2		2		2		2		2		2			
3		3		3		3		3		3			
4		4		4		4		4		4			
5		5		5		5		5		5			
6		6		6		6		6		6			
7		7		7		7		7		7			
8		8		8		8		8		8			
9		9		9		9		9		9			
10		10		10		10		10		10			
11		11		11		11		11		11			
12		12		12		12		12		12			
13		13		13		13		13		13			
14		14		14		14		14		14			
15		15		15		15		15		15			
16		16		16		16		16		16			
17		17		17		17		17		17			
18		18		18		18		18		18			
19		19		19		19		19		19			
20		20		20		20		20		20			
21		21		21		21		21		21			
22		22		22		22		22		22			
23		23		23		23		23		23			
24		24		24		24		24		24			
25		25		25		25		25		25			
26		26		26		26		26		26			
27		27		27		27		27		27			
28		28		28		28		28		28			
29		29		29		29		29		29			
30		30		30		30		30		30			
31		31		31		31		31		31			
32		32		32		32		32		32			
33		33		33		33		33		33			
34		34		34		34		34		34			
35		35		35		35		35		35			
36		36		36		36		36		36			
37		37		37		37		37		37			
38		38		38		38		38		38			
39		39		39		39		39		39			
40		40		40		40		40		40			
41		41		41		41		41		41			
42		42		42		42		42		42			
43		43		43		43		43		43			
44		44		44		44		44		44			
45		45		45		45		45		45			
46		46		46		46		46		46			
47		47		47		47		47		47			
48		48		48		48		48		48			
49		49		49		49		49		49			
50		50		50		50		50		50			
51		51		51		51		51		51			
52		52		52		52		52		52			
53		53		53		53		53		53			
54		54		54		54		54		54			
55		55		55		55		55		55			
56		56		56		56		56		56			
57		57		57		57		57		57			
58		58		58		58		58		58			
59		59		59		59		59		59			
60		60		60		60		60		60			
61		61		61		61		61		61			
62		62		62		62		62		62			
63		63		63		63		63		63			
64		64		64		64		64		64			
65		65		65		65		65		65			
66		66		66		66		66		66			
67		67		67		67		67		67			
68		68		68		68		68		68			
69		69		69		69		69		69			
70		70		70		70		70		70			
71		71		71		71		71		71			
72		72		72		72		72		72			
73		73		73		73		73		73			
74		74		74		74		74		74			
75		75		75		75		75		75			
76		76		76		76		76		76			
77		77		77		77		77		77			
78		78		78		78		78		78			
79		79		79		79		79		79			
80		80		80		80		80		80			
81		81		81		81		81		81			
82		82		82		82		82		82			
83		83		83		83		83		83			
84		84		84		84		84		84			
85		85		85		85		85		85			
86		86		86		86		86		86			
87		87		87		87		87		87			
88		88		88		88		88		88			
89		89		89		89		89		89			
90		90		90		90		90		90			
91		91		91		91		91		91			
92		92		92		92		92		92			
93		93		93		93		93		93			
94		94		94		94		94		94			
95		95		95		95		95		95			
96		96		96		96		96		96			
97		97		97		97		97		97			
98		98		98		98		98		98			
99		99		99		99		99		99			
100		100		100		100		100		100			

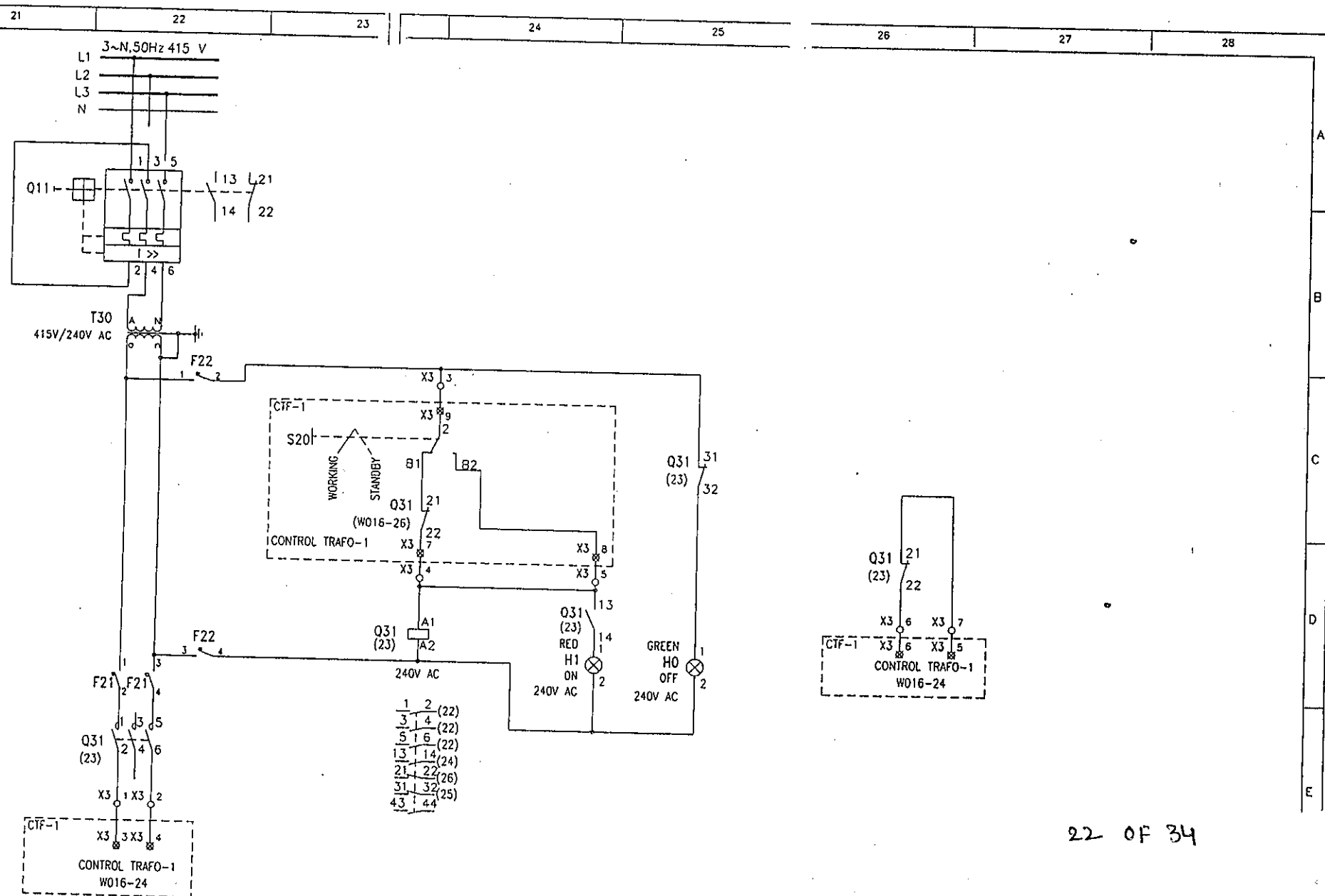


CONTROL TRAFO-1(WORKING)
FEEDER

21 OF 34

The reproduction, transmission or use of this document or its contents is prohibited without express written permission of the Naval Air Station, Dayton, Ohio. All rights, including design, are reserved by the utility model or design, are reserved.

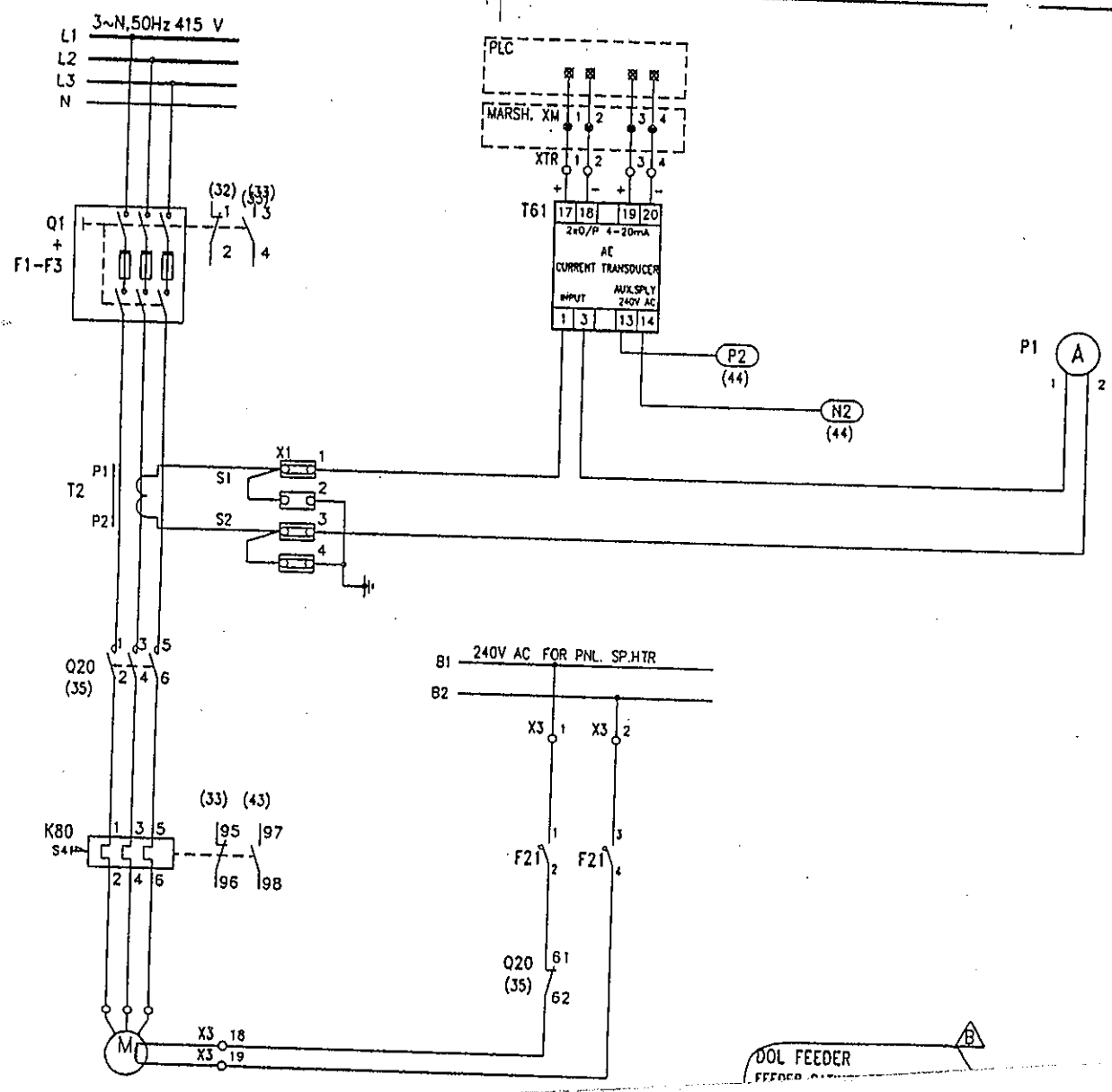
BASIC MODULE :- 6802, 6804, 6806, 6808, 6810, 6812



23 of 34

The representation, use or use of this document or its contents is prohibited without express written authority of the manufacturer. All rights, including rights created by patent grant or otherwise, are reserved.

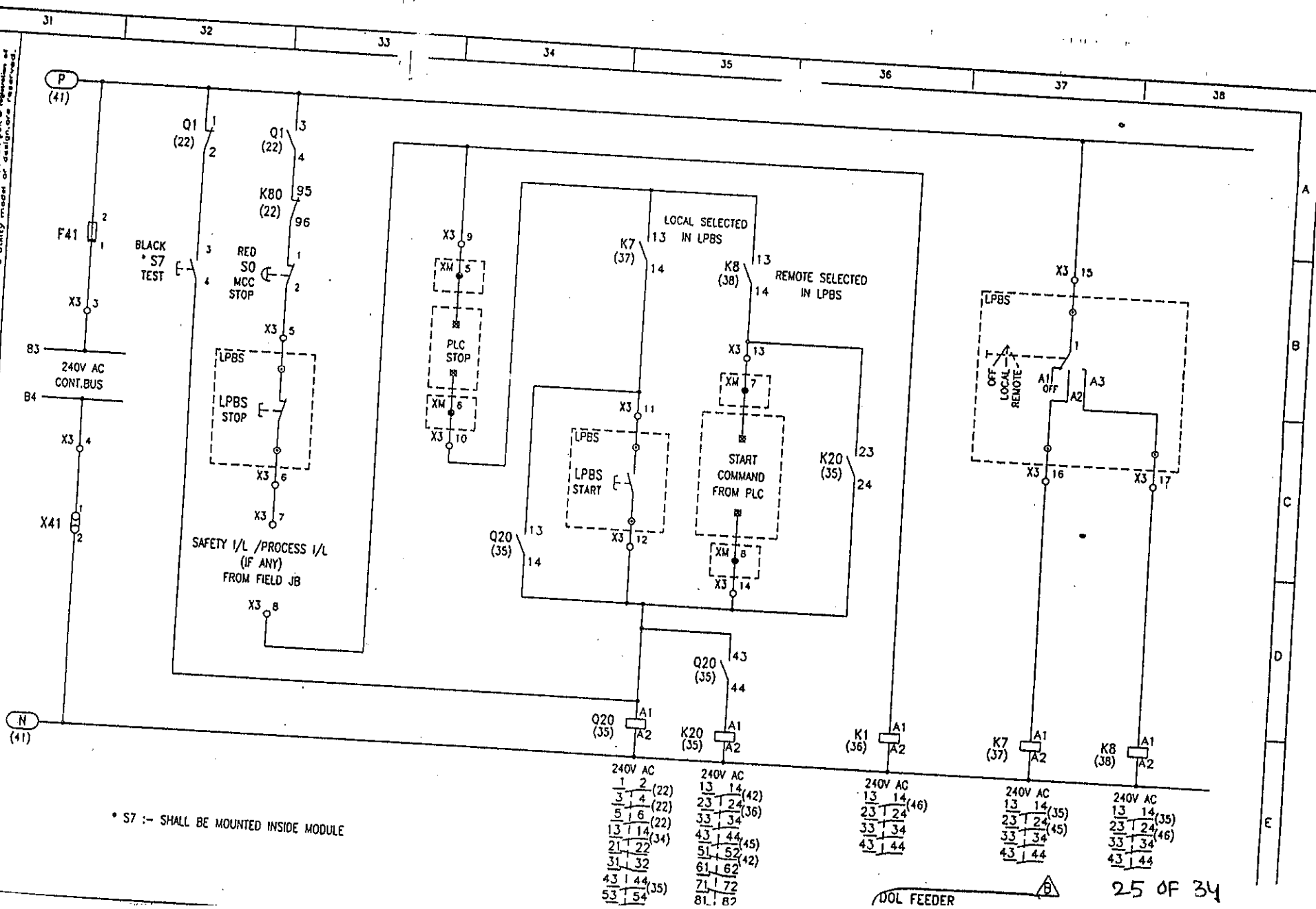
BASIC MODULE : -- 2017, 2019-2022



DOL FEEDER
FEEDER

The reproduction, transmission or use of this document or its contents is not permitted without express written authority of the copyright owner. All rights are reserved. No part of this document may be reproduced or transmitted in any form or by any means electronic or mechanical, including photocopying and recording, or by any information storage or retrieval system, except as may be permitted in writing by the copyright owner.

BASIC MODULE :- 2017,2019-2022

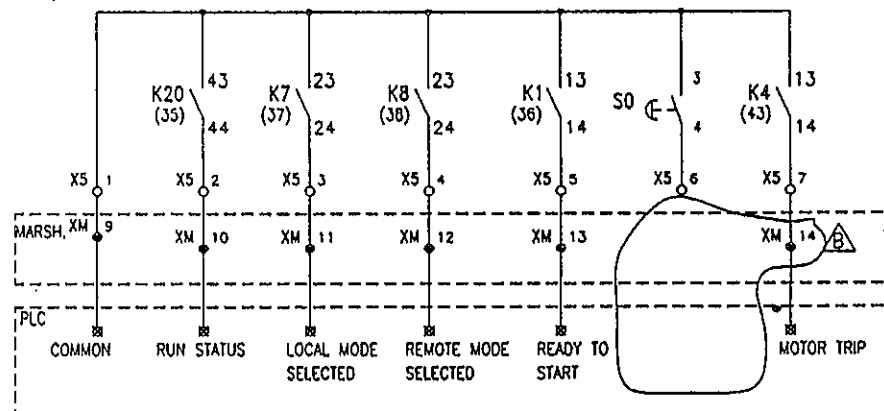
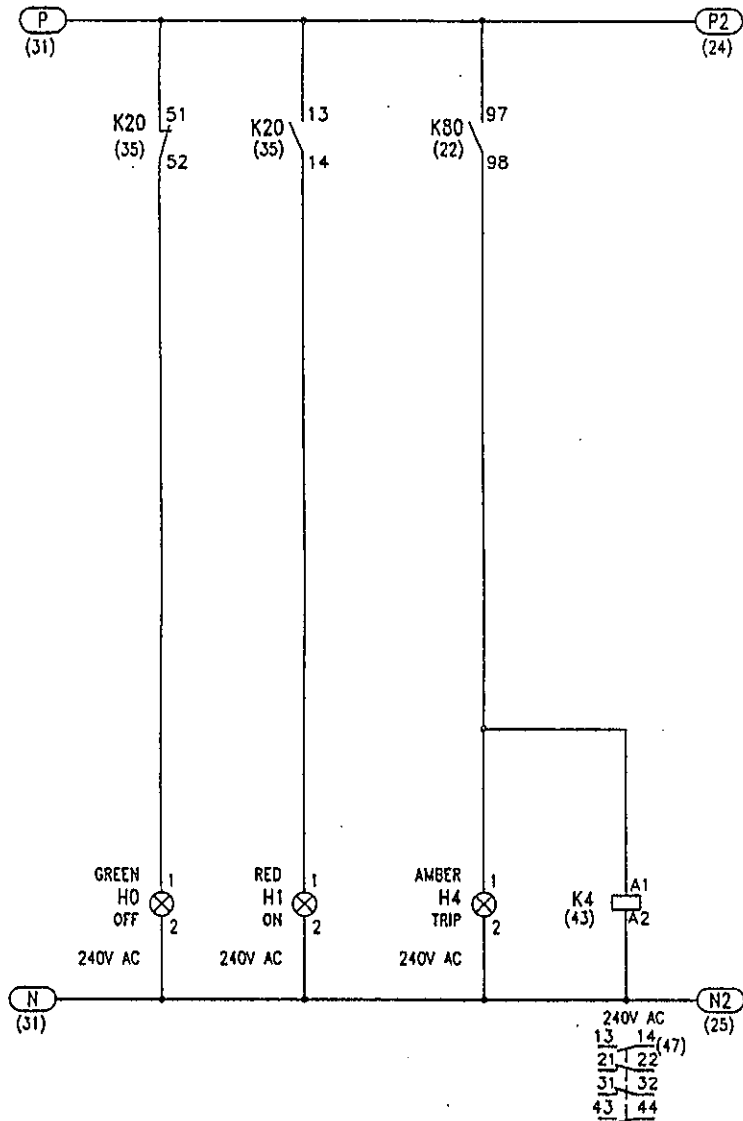


* S7 :- SHALL BE MOUNTED INSIDE MODULE

DOL FEEDER

25 OF 34

Be read in conjunction with the use of this document or any other document. The information contained herein is for reference only and is not to be used for design or construction purposes. The information is subject to change without notice. The information is provided as is and is not to be used for design or construction purposes. The information is provided as is and is not to be used for design or construction purposes.



27 OF 34

BOM FOR 800 AMPS ACB INCOMER

Sl.No	Description	Code	Qty(Nos)
1	ACB: Siemens make withdrawable ACB with guide frame, 3 pole, 500V, 50/60Hz, size 1, current rating: 800 Amps, STC: 50KA/1 sc at 415V, manual/motorised operating mechanism with stored energy feature with mechanical/electrical closing, motor voltage: 240V AC, closing solenoid voltage: 110V DC, Shunt trip release voltage: 110V DC, Aux contacts: 2NO+2NC, Ready to close signalling contact, operation coupler, safety shutters with isolated position limit switch S30(@1CO), with test position limit switch S31(@1CO), with service position limit switch S34(@1CO), Door interlock, with sealing cap over OFF push button with ETU37WT LSING release with LCD display, Terminal configuration: H-V, Type: 3WT8 81-6TF08-5BA2, Make: Siemens	Q10	1
2	N-CT: External CT for Neutral conductor, Type: 3WL9 111-OAA21-OAAO, Make: Siemens	N-CT	1
3	800/1A Current T/F 15VA, Class 1, Bar primary cast resin, insulated, 0.66KV, CT type: AET, Make: Siemens	T1-T3	3
4	415/root3/110/root3 potential T/F, 1 Phase, 50VA, Ci-1, resin cast, Voltage factor: 1.1 continuous & 1.5 for 30 sec, effectively earthed, Make: Precise	T21-T23	3
5	Current Transducer 1 -Ph, CT sec input 1A, Auxiliary supply: 110V AC, Dual DC O/P: 4-20 mA, Make: AE	T61	1
6	Voltage Transducer PTR: 415/root3/110/root3, Aux supply: 110V AC, Dual DC O/P: 4-20mA, Make:AE	T64	1
7	KW Transducer 3 Ph-4wire, 3E, CTR: 800/1A, I/P voltage:110V AC, Aux supply:110V AC, Dual DC O/P: 4-20mA, Acc class:1.0, Make: AE	T67	1
8	0-500V voltmeter, ACC class:1.0, scale:240 deg, taut band, size: 96x96 sqmm, flush mounting, PTR: 415/root3/110/root3	P4	1
9	10A selector switch for voltmeter, Make: Kaycee	S12	1
10	3 Ph 4 wire Test terminal block, flush mounting with rare screw type terminals, make: IMP	X100	1
11	KWH meter, 3 ph 4 wire 3 element, CTR:800/1A, PTR:415/root3/110/root3, size: 96 x 96sqmm, Acc class:1, flush mounting with electromechanical display, Make: AE	P10	1
12	0-800A Ammeter with CT sec 1A, taut band, size:96x96 sqmm, scale: 240 deg, Acc class:1, flush mounting, Mak:;AE	P1	1
13	10A rotary switch 4 pole, 4 way, NO OFF, 440V AC indicating plate 75x75 sqmm, stayput make before break type with wing Knob handle, inscription:1-OFF, 2-R,3-Y,4-B, flush mounting, Make: Kaycee	S11	1
14	6A control fuse link, BS type,Make: siemens	F31-F36	6
15	4A control fuse link, BS type,Make: siemens	F41	1

16	2A control fuse link, BS type, Make: Siemens	F42-F44	3
17	20A Neutral link, make: Siemens	X34, X38, X41	3
18	2A, MCB, DP, 10KA, Make: Siemens	F26, F21, F23, F25	5
19	Red Indicating lamp compact LED type, 240V AC, Make: Siemens	H7	1
20	Yellow Indicating lamp compact LED type, 240V AC, Make: Siemens	H8	1
21	Blue Indicating lamp compact LED type, 240V AC, Make: Siemens	H9	1
22	16A, MCB, DP, 3kA, Make: Siemens	F37, F38	2
23	16A AC/DC rotary switch 2 pole, 2 way with NO OFF, 250V DC indicating plate 75x75 sqmm, flush mounting with wing type knob inscription, 1: DC supply-1, 2: DC Supply-2, Make: Kaycee	S20	1
24	Trip circuit supervision protective relay for continuous supervision 1/2NH, voltage: 110V DC, 1NO + 2 NC S/R, on alarm unit, flush mounting with REV flag, AREVA(VAX31ZG8074B)	K24	1
25	Voltage operated aux relay 1 element with flag 2 NO + 2C/O S/R contacts, Aux supply: 110-125V DC, case size: 1/4NV, flush mounting, AREVA(VAA11YF8402F)	K26, K27	2
26	Electrically reset Aux relay flush mounting, aux voltage: 110V DC, Contacts: 4NO + 4 NC SR, size: 1DV with flag, AREVA(VAJC11)	K45	1
27	16A selector switch suitable for 250V DC inscription: 1-test, 2-normal, 3-switchgear, Make: Kaycee	S15	1
28	Breaker control switch ODS type for 250V AC/DC non lockable with pistol grip handle, spring return to neutral with 2NO at close & 2NO at trip, Make: AREVA	S14	1
29	10A, AC15, Aux contactor with 2NO + 2NC aux contact, 110V DC coil, Make: Siemens	K3T, K4, K9, K7, K8, K6	5
30	10A, AC15, Aux contact with 4 NO aux contact, 110V DC coil, Make: Siemens	K3S	1
31	10A, AC15, Aux contact with 3 NO + 1NC aux contact, 110V DC coil, Make: Siemens	K5	1
32	Red Indicating lamp compact LED type, 110V DC, Make: Siemens	H1	1
33	Green Indicating lamp compact LED type, 110V DC, Make: Siemens	H0	1
34	Amber Indicating lamp compact LED type, 110V DC, Make: Siemens	H4	1
35	White Indicating lamp compact LED type, 110V DC, Make: Siemens	H6	1
36	Blue Indicating lamp compact LED type, 110V DC, Make: Siemens	H5	1

BOM FOR CONTROL TRANSFORMER FEEDER

Sl.No	Description	Code	Qty(Nos)
1	Breaker operating kit for MPCB and accessories of MPCB,50kA, current limiter for 3UV13 and front drive handle for MPCB, Make: Siemens	Q11	2
2	3KVA control T/F, 1Ph, cast resin type, primary voltage: 415V AC with +/- 2.5% & +/- 5% taps, Sec Voltage: 240V AC short time rating:6KVA, Pf;0.7, Make: Precise	T30	2
3	2A, DP, MCB, 10KA, Make: Siemens	F21,F22	4
4	16A, power contactor 240V AC coil voltage with 4No+4NC aux contact block, Make: Siemens	Q31	2
5	16A rotary switch 2 pole 2 way with NO OFF, 250V AC indicating plate 75x75sqmm flush mounting with wing type knob, inscription:1-working,2-stand by, Make: Siemens	S20	1

BOM FOR LIME HANDLING AREA NORMAL MCC PANEL MOTOR FEEDERS

SR. NO.	COMPONENT	MAIN INCOMER-800ACB (Quantity1 No)	11 KW DOL STARTER (QUANTITY 2 NO'S)	15 KW DOL STARTER (QUANTITY 3 NOS)	30 KW DOL STARTER (QUANTITY 3 NOS)	18.5 KW DOL STARTER (QUANTITY 5 NOS)	5.5 KW DOL STARTER (QUANTITY 1 NOS)	125A SWITCH FUSE UNIT (QUANTITY 2NO)	REMARKS
1	SFU(WITH SEPERATORS) WITH OPERATING HANDLE MOUNTED ON THE DOOR.	x	63 AMPS TPN	63 AMPS TPN	100AMPS TPN	80AMPS TPN	32 AMPS TPN	125A TPN	SIEMENS
2	HRC FUSES	x	50 AMPS	63 AMPS	100 AMPS	80 AMPS	32 AMPS	125 AMPS	SIEMENS
3	MAIN CONTACTOR WITH 230V AC COIL AND 2NO + 2NC AUX CONTACTS	x	32 AMPS WITH 230V AC COIL	63 AMPS WITH 230V AC COIL	140 AMPS WITH 230V AC COIL	100 AMPS WITH 230V AC COIL	32 AMPS WITH 230V AC COIL	X	SIEMENS
4	THERMAL OVER LOAD RELAY (INDEPENDENT MOUNTING) MAN / AUTO RESET	x	16-25 AMPS	20-32 AMPS	40-57 AMPS	30-50 AMPS	8-12.5 AMPS	X	SIEMENS
5	AUXILIARY CONTACTOR WITH 230V AC COIL AND 4NO + 4 NC CONTACTS	x	YES	YES	YES	YES	YES	X	SIEMENS
6	PVC INSULATED MULTI STRAND FLEXIBLE COPPER WIRE FROM MAIN BUS BARS TO SFU	x	10 SQMM	16 SQMM	35 SQ MM	25 SQ MM	6 SQMM	X	POLYCAB / FINOLEX
7	PVC INSULATED MULTI STRAND FLEXIBLE COPPER WIRE FROM SFU TO CONTACTOR	x	10 SQMM	16 SQMM	35 SQ MM	25 SQ MM	6 SQMM	X	POLYCAB / FINOLEX
8	PVC INSULATED MULTI STRAND FLEXIBLE COPPER WIRE FROM CONTACTOR TO OVERLOAD RELAY	x	10 SQMM	16 SQMM	35 SQ MM	25 SQ MM	6 SQMM	X	POLYCAB / FINOLEX
9	PVC INSULATED MULTI STRAND FLEXIBLE COPPER WIRE FROM OVERLOAD RELAY TO MAIN TERMINAL BLOCK	x	10 SQMM	16 SQMM	35 SQ MM	25 SQ MM	6 SQMM	X	POLYCAB / FINOLEX
10	CAST RESIN TYPE TRANSFORMER KAPPA / KALPA / AE MAKE OF SUITABLE VA	x	25A/1A	30A/1A	60A/1A	50A/1A	25A/1A	X	KAPPA / KALPA / AE

11	2.5 SQ MM PVC INSULATED MULTI STRAND FLEXIBLE COPPER WIRE FOR ALL CONTROL WIRING INCLUDING METERING	YES	YES	YES	YES	YES	YES	X	POLYCAB / FINOLEX
12	PVC INSULATED MULTI STRAND FLEXIBLE COPPER WIRE FROM OVERLOAD RELAY TO MAIN TERMINAL BLOCK	x	10 SQMM	16 SQMM	35 SQ MM	25 SQ MM	6 SQMM	X	POLYCAB / FINOLEX
13	AMMETER	x	SUITABLE RANGE	SUITABLE RANGE	SUITABLE RANGE	SUITABLE RANGE	SUITABLE RANGE	X	AE
14	AMMETER SELECTOR SWITCH	x	YES	YES	YES	YES	YES	X	VAISHNO / KAYCEE
15	VOLTMETER	0-600V	X	X	X	X	X	X	AE
16	VOLTMETER SELECTOR SWITCH	RY , YB , BR , OFF	X	X	X	X	X	X	VAISHNO / KAYCEE
17	MOTOR START (GREEN) AND STOP MUSHROOM TYPE SELF LOCKABLE (RED) PUSH BUTTON SWITCHES	X	YES	YES	YES	YES	YES	X	VAISHNO / SIEMENS / ABB
18	MAIN R Y B LED TYPE INDICATING LAMPS	RED, YELLOW, BLUE	X	X	X	X	X	X	VAISHNO / SIEMENS / ABB
19	MOTOR ON INDICATING LED LAMP RED	x	YES	YES	YES	YES	YES	X	VAISHNO / SIEMENS / ABB
20	MOTOR O / L TRIP LED INIDCATING LAMP	x	YES	YES	YES	YES	YES	X	VAISHNO / SIEMENS / ABB
21	LOCAL / OFF / REMOTE SELECTOR SWITCH 10 AMPS RATING	x	YES	YES	YES	YES	YES	X	VAISHNO / KAYCEE
22	TERMINAL BLOCK FOR MOTOR CABLE OF SUITABLE RATING WITH SEPERATORS BETWEEN TERMINALS (BOLTED TYPE)	X	YES	YES	YES	YES	YES	X	REPUTED
23	CONTROL FUSE	X	YES	YES	YES	YES	YES	X	SIEMENS / ABB
24	TERMINAL BLOCK FOR CT CONNECTIONS TO AMMETER AND ASS WITH CT SHORTING PROVISION	YES	YES	YES	YES	YES	YES	X	REPUTED

25	TERMINAL BLOCK FOR CONTROL AND REMOTE OPERATIONS	X	YES	YES	YES	YES	YES	X	REPUTED
26	20A METAL CLAD 3 PIN SOCKET WITH 20A DP MCB WITH METAL CLAD 3 PIN PLUG	1 No						X	BHARATIA CUTTLER HAMMER
27	SINGLE PHASE PREVENTER	X	YES	YES	YES	YES	YES	X	ABB/SIEMENS/L&T/GIC
28	COPPER CONTROL BUS BAR(P&N) 230V AC	COPPER BUS BAR OF SIZE 10MM X 5 MM(THE CONTROL WIRES SHOULD BE CONNECTED TO THE BUSBAR USING SCREWS. ROUND TYPE LUGS SHOULD BE USED							
29	CONTROL TRANSFORMER	3KVA CONTROL TRANSFORMER, 1 PHASE, CAST RESIN TYPE, PRIMARY VOLTAGE:415V AC WITH +/-2.5% & +/- 5% TAPS, SECONDARY VOLTAGE:240V AC, SHORT TIME RATING:6KVA, MAKE: PRECISE, QUANTITY:2NOS							
30	Current Transducer 1 -Ph, CT sec input 1A, Auxiliary supply: 230V AC, Dual DC O/P: 4-20 mA, Make: AE		YES	YES	YES	YES	YES	X	AE