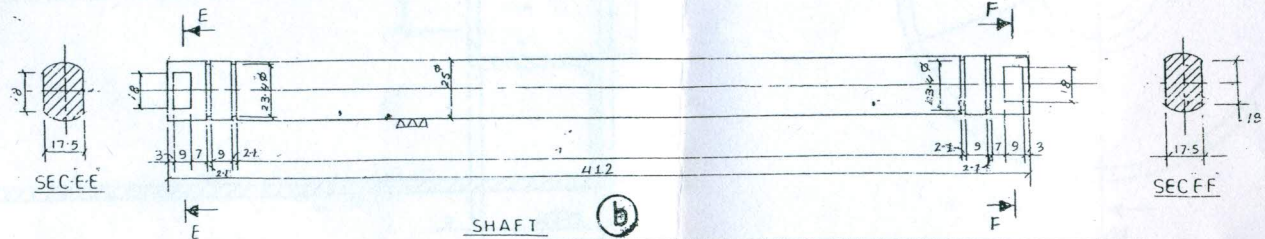
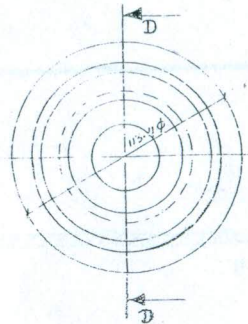


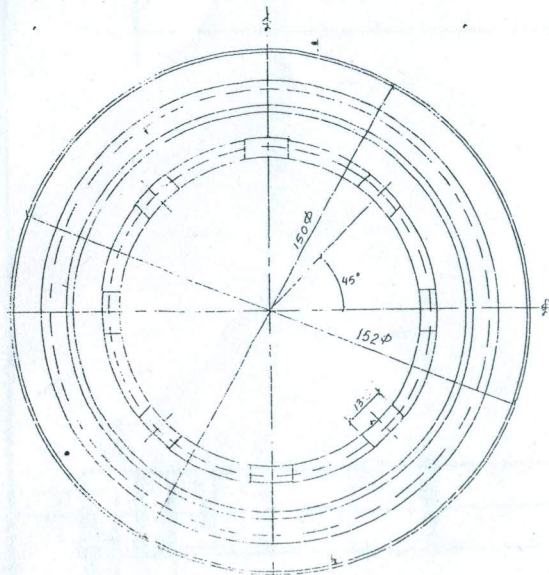
SECTION D-D

(a)



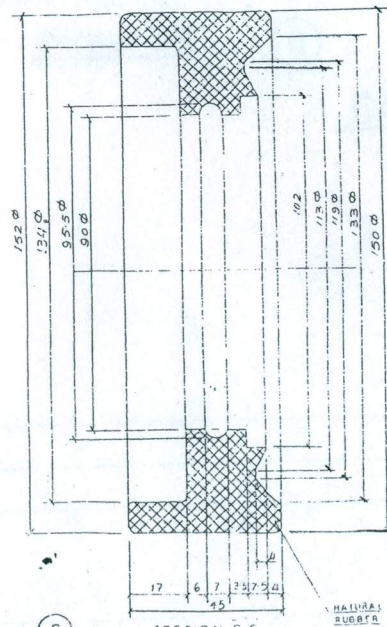
SHAFT

(b)



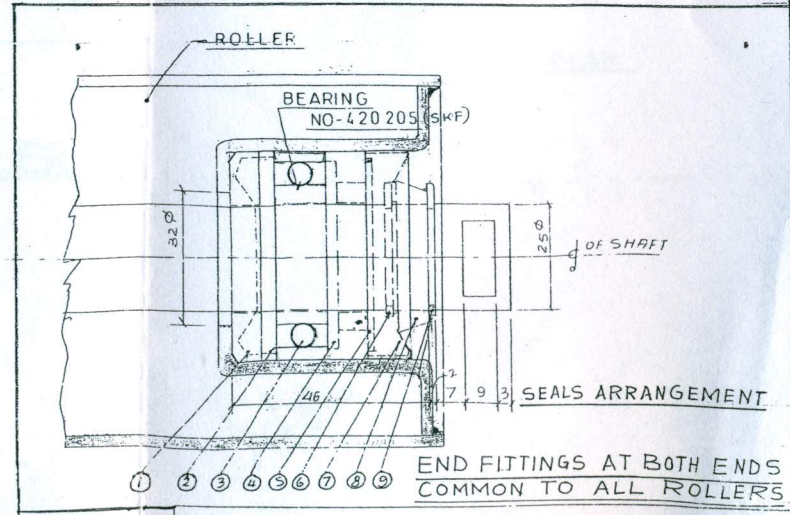
PLAN

IMPACT ROLLER



SECTION C-C

(c)



URANIUM CORPORATION OF INDIA LIMITED
A GOVT. OF INDIA ENTERPRISE
NARWAPAHAR

DRN BY: K. SHARMA

Date
24-10-11

CHKD BY: R.B. MOURYA
Addl. Supdt. (Mech.)

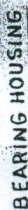
APPVD BY:

IMPACT ROLLER

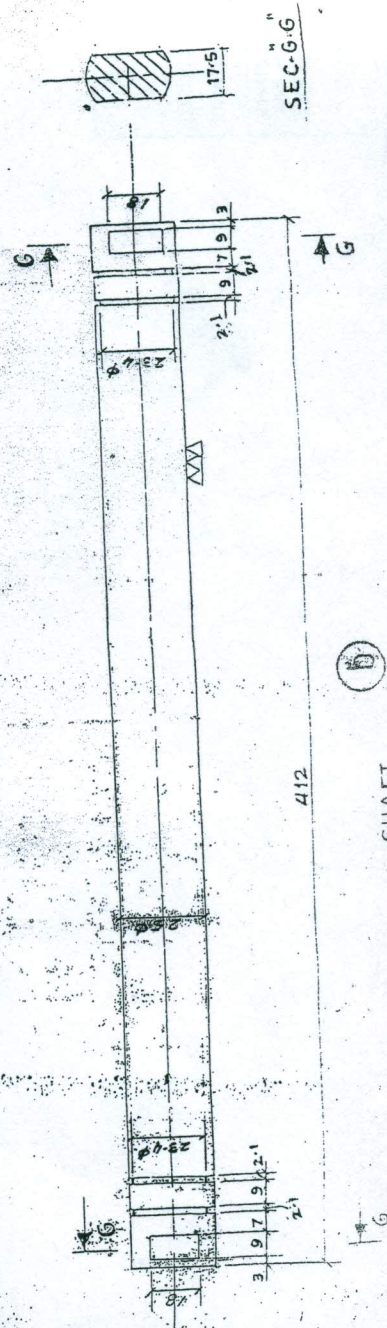
SCALE: 1:1.5 & 1:2.5

DRG. NO. UCHL/NWP/S-118/1

Handwritten signature



CARRYING IDLER



SHAFT

DIMENSIONS ARE IN M.M.

PLAN

URANIUM CORPORATION OF INDIA LIMITED
A GOVT. OF INDIA ENTERPRISE
NAGARPAPAHAR

CARRYING IDLER

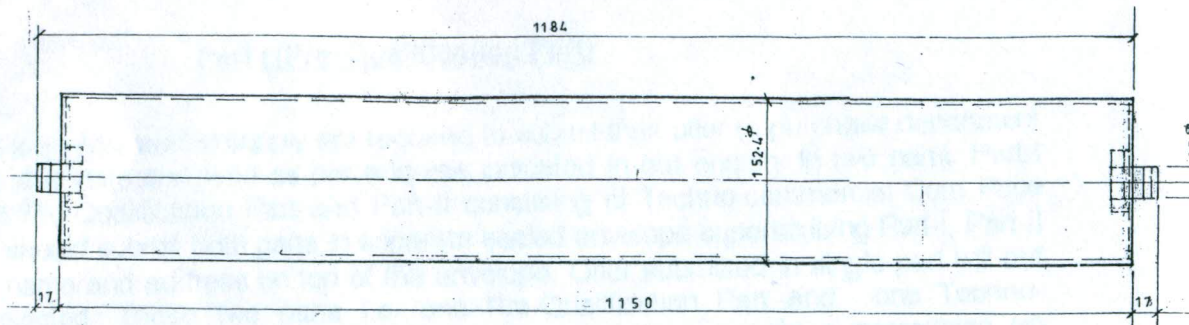
WRN BY. K. SHARMA

CHKD BY: U.K. PAUL

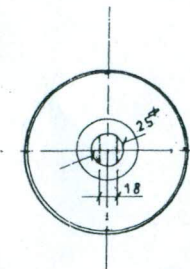
APPVD. BY-P. RAMAKRISHNAN (MACH)

2:1-3.19 Ja

DRG. NO. UCIL/ NWP/S - 118/2.

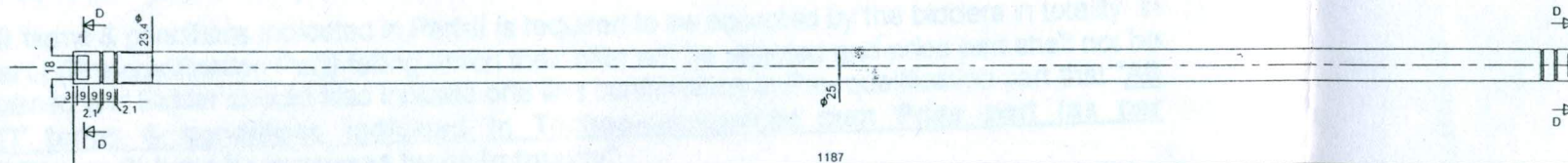


ELEVATION



SIDE VIEW

RETURN IDLER



SHAFT



SEC - D-D

URANIUM CORPORATION OF INDIA LIMITED

A GOVT. OF INDIA ENTERPRISE

NARWAPAHAR

DRN. BY- K SHARMA

Date

6-7-13

CHKD. BY- R.B. MOURYA
Addl. supdt. (Mech)

RETURN IDLER

APPVD BY-

SCALE- 1:5

DRG. NO- UCIL/ NWP/S-118/3