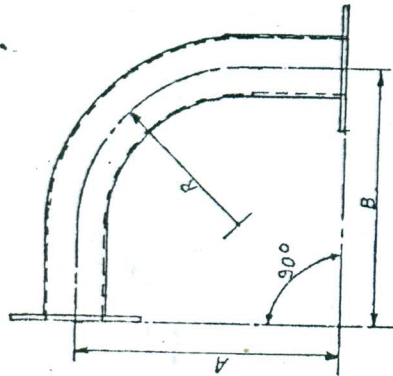


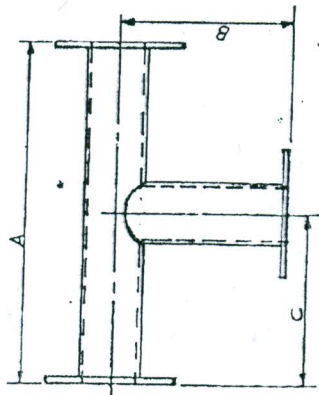
A



90° BEND MSRL PIPE

B

ITEM NO.	PIPE SIZE	A	B	R	R.L. THICK
1	65NB	290	290	225	4
2	80NB	295	295	225	4
3	100NB	455	455	400	4
4	100NB	540	540	455	4
5	150NB	650	650	560	5
6	150NB	580	580	455	5
7	200NB	810	810	810	6
8	250NB	1010	1010	1010	6
9	125NB	600	600	475	5
10	200NB	395	395	300	6



'T' JOINT MSRL PIPE

ITEM NO.	PIPE SIZE	A	B	C	R.L. THICK
1	65NB	342	171	171	4
2	80NB	368	185	185	4
3	100NB	406	203	203	4
4	150NB	508	254	254	5
5	200NB	610	305	305	6
6	250NB	762	381	381	6
7	125NB	450	220	220	5

1. SOFT NATURAL RUBBER 1. TO BE LINED INSIDE PIPE AND THE FLANGE.

2. ALL DIMENSIONS ARE GIVEN INCLUDING THE THICK. OF THE RUBBER.

3. THE FLANGES ARE TO BE DRILLED AS PER BS-10, TABLE-D OFF CENTRE HOLES.

4. ALL PIPES UPTO 150 NB SHOULD CONFORM TO IS-1238, 1239 PART-I AND PART II, MEDIUM.

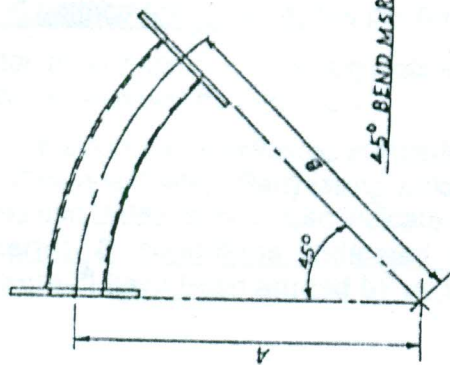
5. ALL PIPES ABOVE 150 NB SHOULD CONFORM TO IS-3589 ERW 6.35 THK.

6. ALL BENDS SHOULD BE SMOOTH.

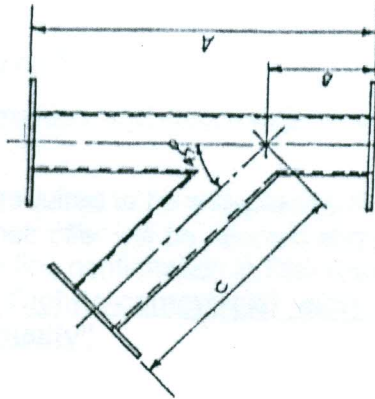
7. ALL RUBBER LINING SHOULD CONFORM TO IS-4682.

8. ALL DIMENSIONS ARE IN MM.

C



45° BEND MSRL PIPE



'Y' JOINT MSRL PIPE

ITEM NO.	PIPE SIZE	A	B	C	R.L. THICK
1	65NB	310	95	222	4
2	80NB	356	83	273	4
3	100NB	440	130	308	4
4	150NB	594	135	460	5
5	200NB	762	203	610	6
6	250NB	915	254	762	6
7	125NB	550	125	285	5

PHYSICAL CHARACTERISTICS

OF RUBBER

1. SP. GR. 1.1-1.2

2. % ELONGATION-400-250

3. TENSILE STRENGTH 160-180 Kg/cm²

4. HARDNESS-40 ± 5° SHORE-A

5. ASH CONTENT-7% MAX.

REV. B-ALL DIMENSION CHANGE INTO MM
REV. A-200NB 250NB PIPE ADD.

URANIUM CORPORATION OF INDIA LTD.
(A GOVT. OF INDIA, DEPARTMENT OF ATOMIC ENERGY ENTERPRISE)

SCALE N.T.S.

DRAWN BY 10/11/92

CHECKED BY 10/11/92

APPROVED BY 10/11/92

DATE 10/11/92

M.S.-R.L. PIPE FITTINGS

DIMENSIONS IN MM PROJECTION

TOLERANCE

CIRCL. NO. 10/11/92

REVISION

A B

COMPOSITION OF MATERIAL

NOTES

A

B

C

D