

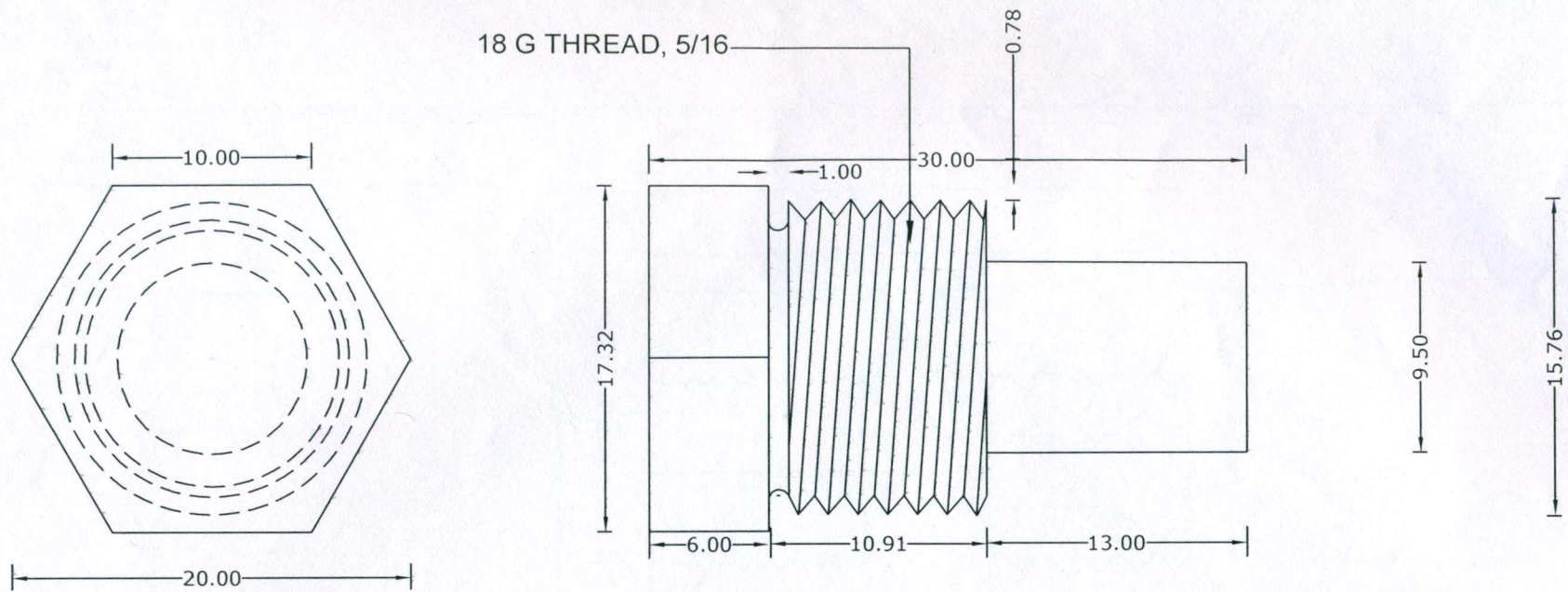


**BOOMER 281**  
**ALTERNATOR PULLY**  
**MOC:EN-19**

ORG. NO. 1

Final Exam Star pass

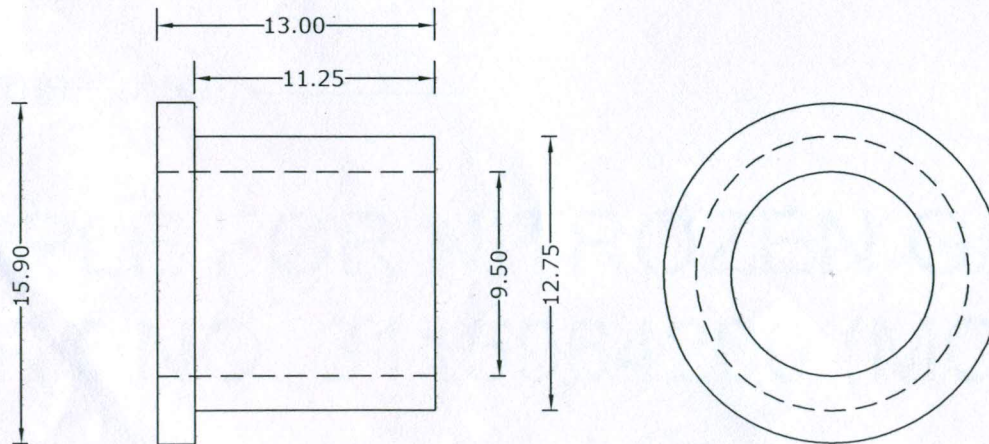




**BOLT SHAFT BRAKE PADLE (MOC:EN 16 /19)**

DRG. NO:-2

*[Signature]*



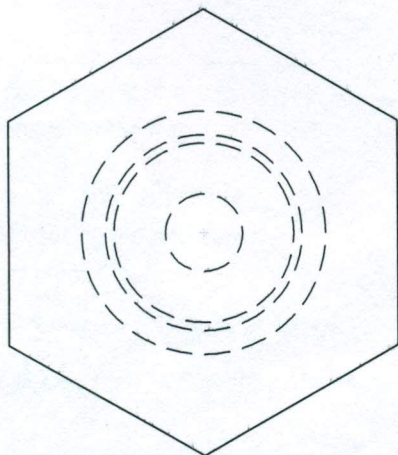
**BUSH BRAKE PADLE(MOC:ALLUMINIUM BRONZE)**

DRG. No:-3.

*[Signature]*



17.50



15.16

15.21

7.65

22.79

14.29

8.50

28 G THREAD

7.65

9.00

32 G THREAD, 5/32

# NIPPLE FOR NITROZEN GAS CHARGING, PART NO. 3115064200 (MOC: PURE BRASS)

DESIGN NO. 4

10 June