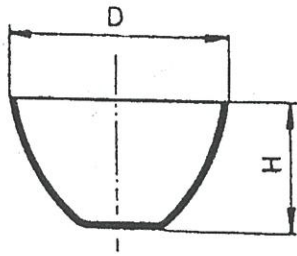
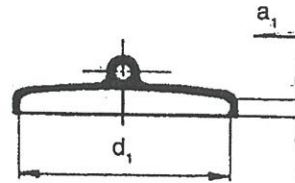
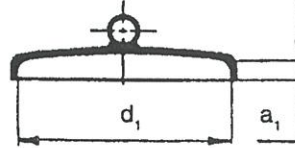


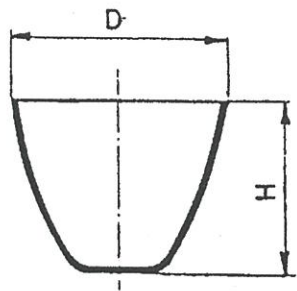
Annexure



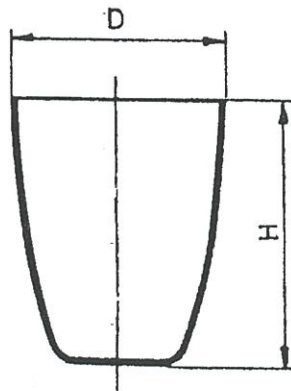
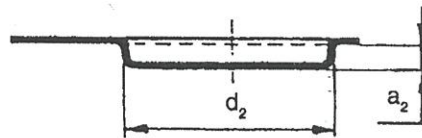
a) LOW FORM CRUCIBLE (TYPE 1)



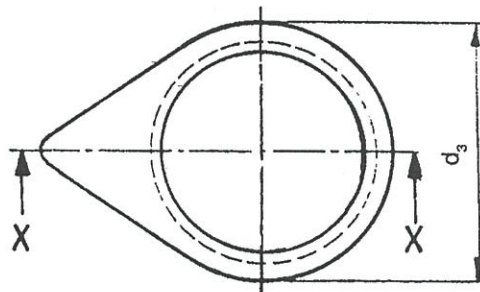
d) DOMED LID (TYPE D)



b) MEDIUM FORM CRUCIBLE (TYPE 2)



c) TALL FORM CRUCIBLE (TYPE 3)



e) RECESSED LID (TYPE R)

FIG. 1 SILICA CRUCIBLES AND LIDS