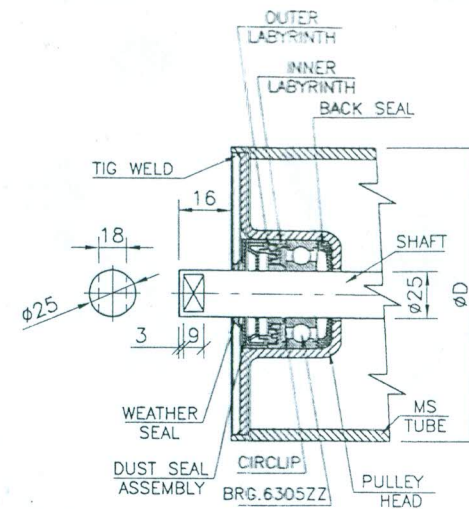


| ROLLER TYPE | A   | B   | ØD  | INSTALLED BRG. NO |
|-------------|-----|-----|-----|-------------------|
| 5H          | 200 | 232 | 115 | 6305 ZZ           |
| 6H          | 235 | 267 | 115 | 6305 ZZ           |



DETAIL - "A"

|                  |  |
|------------------|--|
| MATERIAL OF ROLL | TUBE AS PER IS 9295-1993                 |
| SHAFT Ø          | Ø25 mm (C-40, IS 9550)                   |
| BEARING          | DEEP GROOVE BALL BEARING SKF/FAG 6305 ZZ |
| ROLL MOUNTING    | DROP IN SLOT TYPE SERVO GEM EP-2         |
| LUBRICATION      | LUBRICATED FOR LIFE                      |

- NOTE :-
- 1) ALL ROLLER SHOULD BE PAINTED WITH ONE COAT OF ZINC CHROMATE PRIMER AND TWO COATS OF SYNTHETIC ENAMEL PAINT.
  - 2) ROLLER SHOULD BE GREASE PACKED AND SEALED FOR LIFE. ROLLER SHOULD BE PROVIDED WITH A MULTI-LABYRINTH NON CONTACT TYPE SEAL TO KEEP DUST AND MOISTURE AWAY FROM THE ROLLER BEARING. WATER PROOF WEATHER CAP TO BE PROVIDED AT THE ROLLER END TO PREVENT WATER ENTERING FROM OUT SIDE ROLLER SHOULD BE PROVIDED WITH BACK SEAL TO PREVENT GREASE ENTERING INSIDE THE ROLLER.



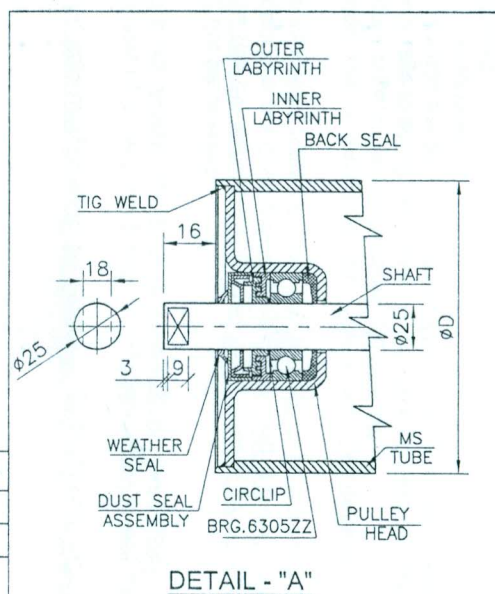
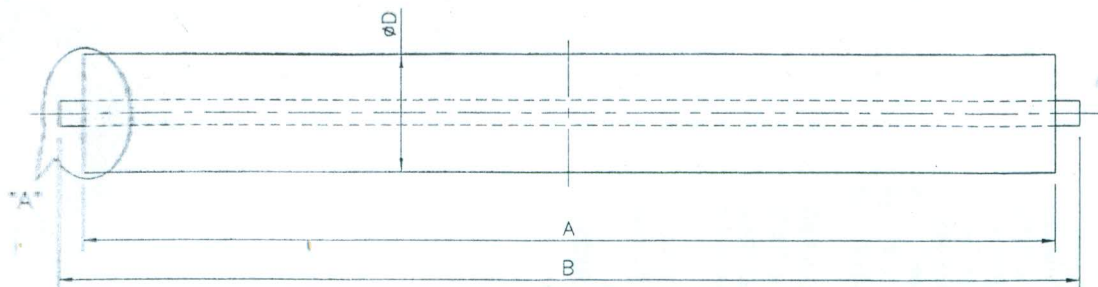
URANIUM CORPORATION OF INDIA LTD. TURAMDHI MINES  
(A GOVT. OF INDIA ENTERPRISE, DEPT. OF ATOMIC ENERGY)

|                  |           |          |       |
|------------------|-----------|----------|-------|
| DRN.             | Rajesh    | 23.02.19 | TITLE |
| CHECKED          | P S Majhi |          |       |
| APPROVED         | MKS       |          |       |
| SCALE - NTS      |           |          |       |
| DIMENSIONS IN MM |           |          |       |

SUPPORT ROLLER FOR TROUGHING

DRG.NO.- UCT-IB/MECH/CB/ROLLER/111 REV.- 0

| REV | REV. BY | DATE | DESCRIPTION |
|-----|---------|------|-------------|
|     |         |      |             |



| ROLLER TYPE | A   | B   | ØD  | INSTALLED BRG. NO. |
|-------------|-----|-----|-----|--------------------|
| 5H          | 600 | 632 | 115 | 6305 ZZ            |
| 6H          | 700 | 732 | 115 | 6305 ZZ            |

|                  |  |
|------------------|--|
| MATERIAL OF ROLL | TUBE AS PER IS 9295-1993<br>TUBE THK.-6.3 mm |
| SHAFT Ø          | Ø25 mm (C-40, IS 9550)                       |
| BEARING          | DEEP GROOVE BALL BEARING<br>SKF/FAG 6305 ZZ  |
| ROLL MOUNTING    | DROP IN SLOT TYPE                            |
| LUBRICATION      | LUBRICATED FOR LIFE<br>SERVO GEM EP-2        |

# NOTE :-

- 1) ALL ROLLER AND HANGER/FRAME SHOULD BE PAINTED WITH ONE COAT OF ZINC CHROMATE PRIMER AND TWO COATS OF SYNTHETIC ENAMEL PAINT.
- 2) ROLLER SHOULD BE GREASE PACKED AND SEALED FOR LIFE. ROLLER SHOULD BE PROVIDED WITH A MULTI-LABYRINTH NON CONTACT TYPE SEAL TO KEEP DUST AND MOISTURE AWAY FROM THE ROLLER BEARING. WATER PROOF WEATHER CAP TO BE PROVIDED AT THE ROLLER END TO PREVENT WATER ENTERING FROM OUT SIDE ROLLER SHOULD BE PROVIDED WITH BACK SEAL TO PREVENT GREASE ENTERING INSIDE THE ROLLER.
- 3) ONE SET CONSISTS OF ONE ROLLER WITH SHAFT ASSEMBLY AND TWO M.S. MOUNTING BRACKET.



URANIUM CORPORATION OF INDIA LTD. TURAMDHI MINES  
(A GOVT. OF INDIA ENTERPRISE, DEPT. OF ATOMIC ENERGY)

DRN. Rajesh 23.02.19

CHECKED P S Majhi

APPROVED MKS

SCALE - NTS

DIMENSIONS IN MM

TITLE

RETURN SUPPORT ROLLER

DRG. NO. UCT-IB/MECH/CB/ROLLER/113

REV.-0

*Signature*

| REV | REV. BY | DATE | DESCRIPTION |
|-----|---------|------|-------------|
|     |         |      |             |
|     |         |      |             |
|     |         |      |             |