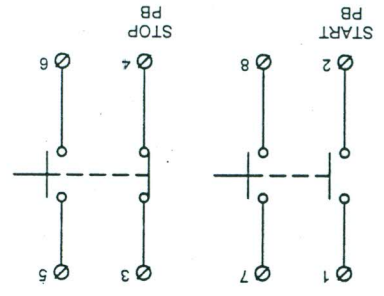
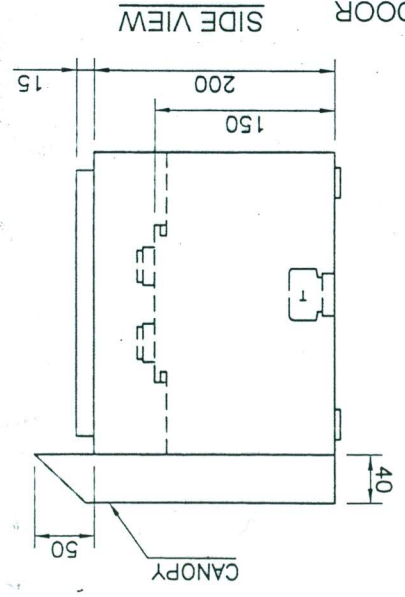
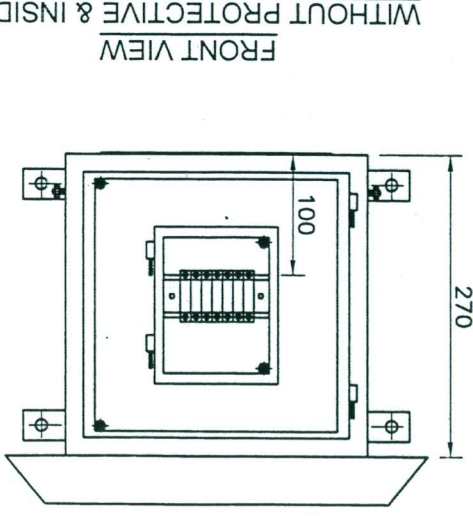
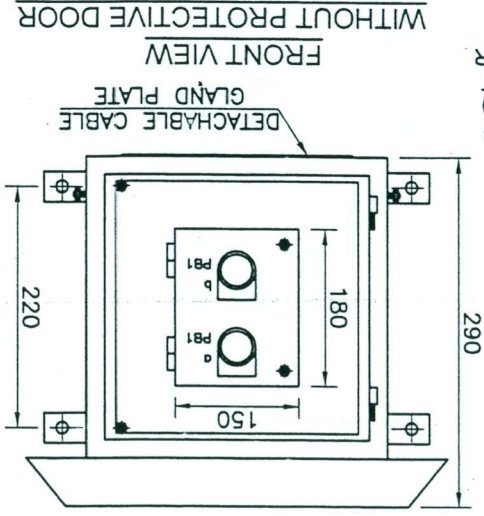
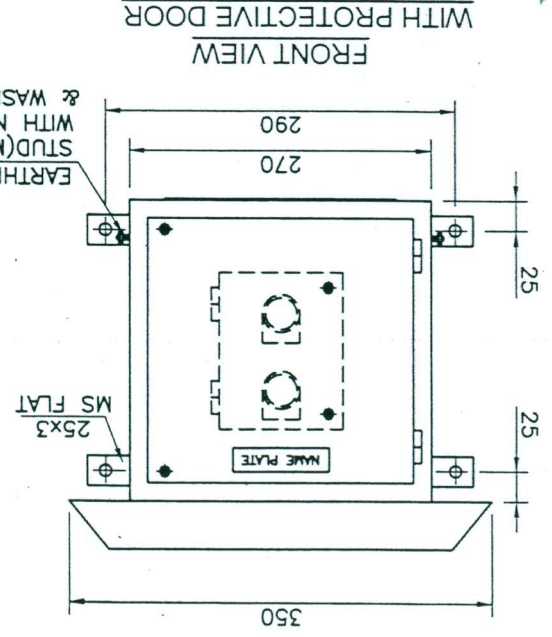



- NOTE :- 1) ALL DIMENSIONS ARE IN MM
- 2) ALL SHEET METAL WORKS ARE OF 2 mm THK. CRCA SHEET STEEL
  - 3) ALL OPENINGS WILL BE COVERED WITH NEOPRENE RUBBER GASKET
  - 4) THE ENCLOSURE WILL BE PAINTED AS POWDER COATED PAINT OF SHADE NO. RAL 7032 AFTER NECESSARY CHEMICAL TREATMENT
  - 5) DEGREE OF PROTECTION : IP:65
  - 6) NAME PLATES WILL BE MADE FROM BLACK ANODISED ALUMINIUM SHEET WITH NO LETTERS ENGRAVED ON IT.
  - 7) ALL WIRING WILL BE DONE BY 2.5 Sq.mm PVC INSULATED STRANDED COPPER WIRE OF 650 V GRADE.
  - 8) THE HINGED DOOR WILL BE EARTHED BY FLEXIBLE CU BRAIDED WIRE
  - 9) DOOR OF THE ENCLOSURE SHALL HAVE PROPER LOCKING ARRANGEMENT AS GENERALLY DONE IN ELECTRICAL PANEL
  - 10) PUSH BUTTONS WITH TERMINALS IN SHEET METAL ENCLOSURE
  - 11) CONTROL TERMINAL SHALL BE CST-10 OF ELMAX MAKE OR EQUIVALENT OF CONNECTWELL MAKE
  - 12) IN SHEET JOINTING AREA WELDING SHALL BE CONTINUOUS TIG WELDING FOR SHEET JOINTING NOT ACCEPTABLE.
  - 13) LPBS SHALL BE SUITABLE FOR OUTDOOR USE.

2/4/12



 <b>URANIUM CORPORATION OF INDIA LTD. TURAMDIH MILL</b> (A GOVT. OF INDIA ENTERPRISE, DEPT. OF ATOMIC ENERGY)	DRN. Rajesh 22.07.13	CHECKED J. Roy	APPROVED G. DHAR	SCALE -	DIMENSIONS IN MM
	TITLE				
	LOCAL PUSH BUTTON STATION				
	(L.P.B.S.)				
DRG. NO. - MILL/TMD/ELECT.-35					
REV. 0					

8334  
Drawing 4