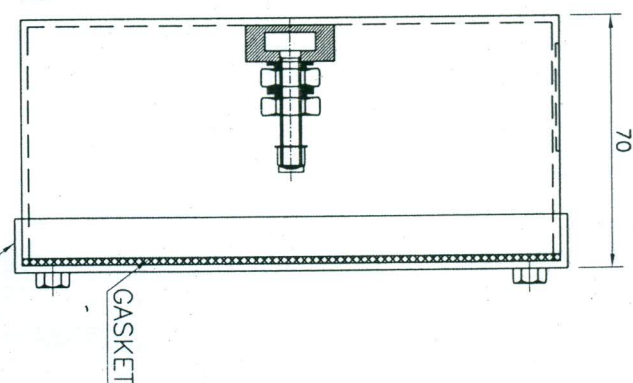


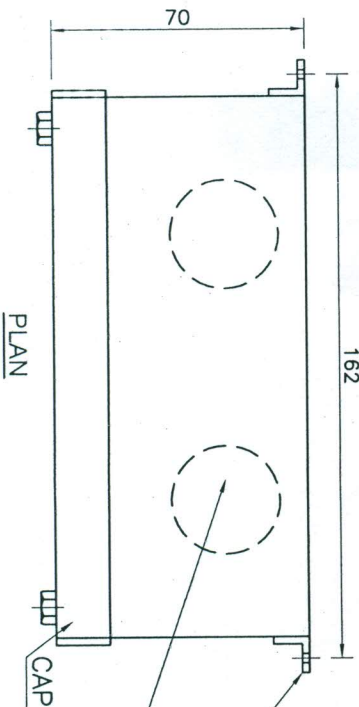
FRONT VIEW WITHOUT CAP



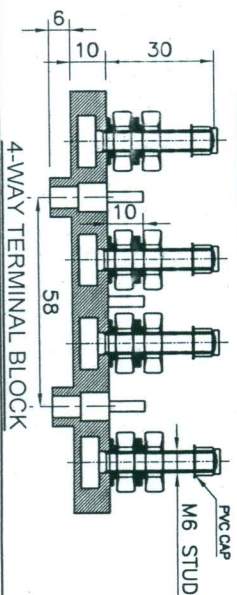
FRONT VIEW WITH CAP



SIDE VIEW



PLAN



4-WAY TERMINAL BLOCK

NOTE:-

- 1) COVER OF BOX SHALL BE PROVIDED WITH NEOPRENE GASKET
- 2) ENCLOSURE PROTECTION SHALL BE IP 55 AS PER IS:2147
- 3) BOX SHALL BE FABRICATED WITH 3 mm THK. CRCA SHEET STEEL
- 4) ALL DIMENSIONS ARE IN MM
- 5) PAINTING SHALL BE ENAMEL LIGHT GREY SHED N 631 IS:5

SPECIFICATION OF 4-WAY T.B.

- 1) INSULATING MATERIAL SHALL BE DMC
- 2) ALL NUTS, BOLTS, WASHERS SHALL BE ZINC PASSIVATED
- 3) ALL STUD SHALL BE MADE OF YELLOW CHROMATED G.I.
- 4) PVC CAP SHALL BE COLOUR CODED RED, YELLOW, BLUE & BLACK



URANIUM CORPORATION OF INDIA LTD. TURAMDIH MILL  
(A GOVT. OF INDIA ENTERPRISE, DEPT. OF ATOMIC ENERGY)

DRN. Rajesh 06.04.13 TITLE

CHECKED S.C. Halder

APPROVED G. DHAR

SCALE -

DIMENSIONS IN MM

JUNCTION BOX FOR LIGHTING

DRG. NO. - MILL/TMD/ELECT.-22

REV - 1